

TCM[®]

PARTS MANUAL

DIESEL ENGINE

V3300-BF-TCM-1

KUBOTA

TCM CORPORATION

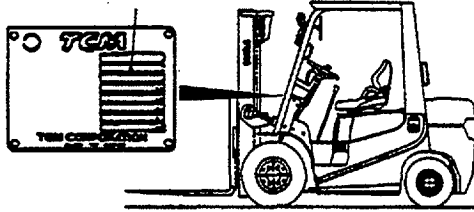
ご使用のまえに

このパーツマニュアルは、**TCM 7-7171** のエンジンの構成部品を収録しています。

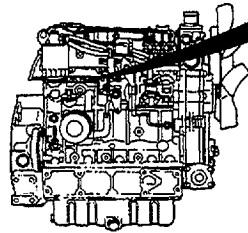
部品ご注文について

部品ご注文の際は、必ず車両の形式・製造番号（号車）、エンジンの形式・製造番号（号機）、部品番号および注文数を明示してください。車両の製造番号（号車）は車両銘板に、エンジンの製造番号（号機）は、シリンダブロックに打刻しています。

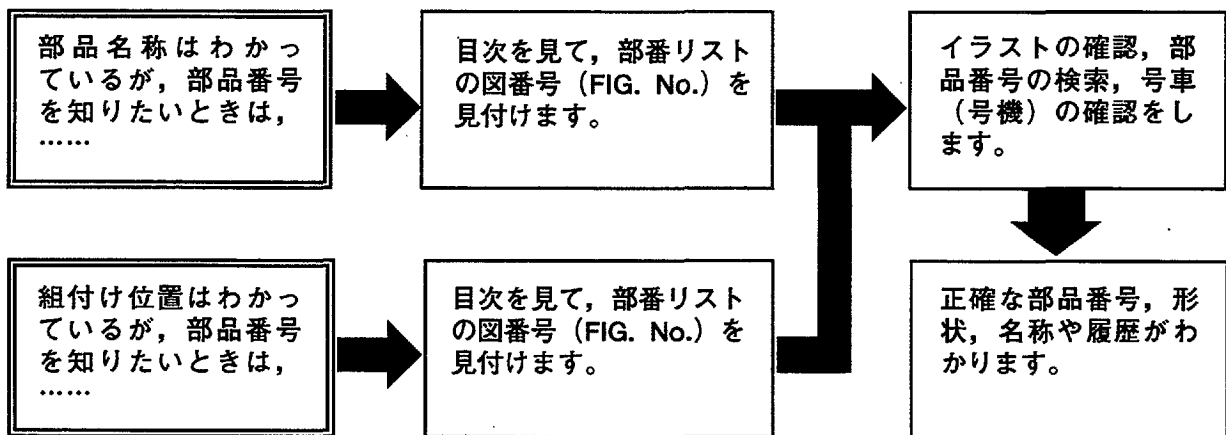
製造番号（号車）



エンジン製造番号
打刻位置



ご使用について



略語および記号

- ASSY 組立品を示します。
- RH 車両の前方向に向かって右側を示します。
- LH 車両の前方向に向かって左側を示します。
- * セットおよびキットの販売部品を示します。

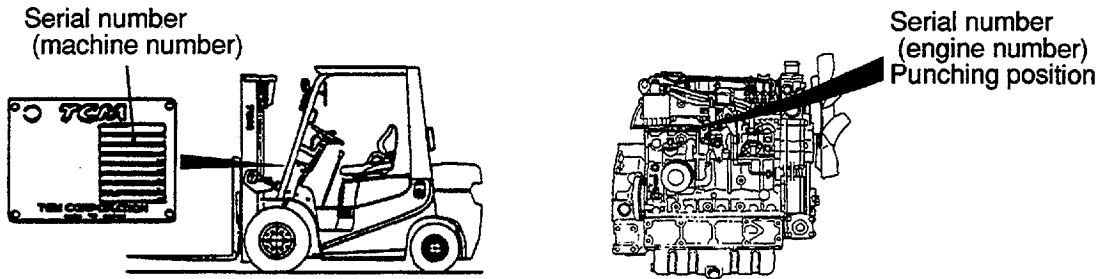
部品は、品質向上のため予告なく変更することがありますので、あらかじめご了承ください。

INTRODUCTION

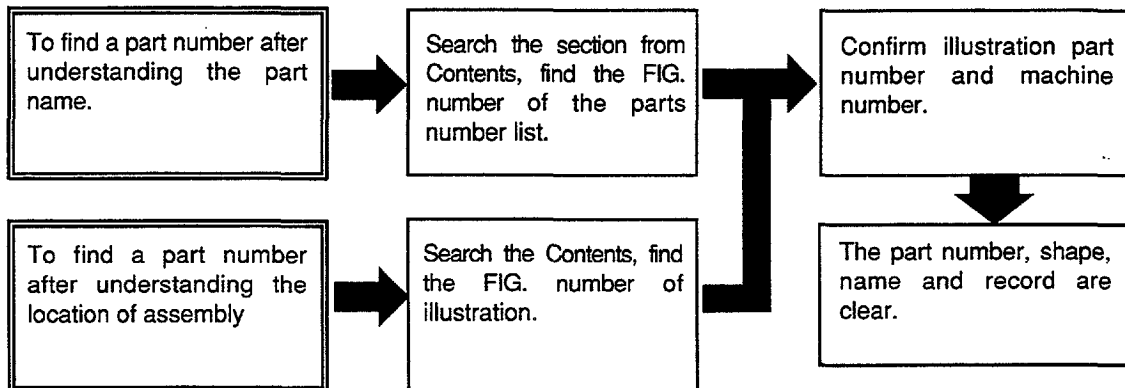
This Parts Manual contains the component parts of the engine mounted on **TCM FORKLIFT TRUCK**.

How to order parts

When ordering, be sure to specify the model name and serial number (machine number), engine type and serial number (engine number) of your machine, as well as the part number and desired quantity for each part. The machine serial number (machine number) is indicated on the machine name plate, the engine serial number (engine number) is punched on the cylinder block.



How to use the Parts Manual



Abbreviations and symbols

- ASSY ... Assembled unit.
- RH Right-hand when viewed forward on the truck.
- LH Left-hand when viewed forward on the truck.
- * The marketable part set or kit.

Materials and specifications subject to change without notice.

APPLICABLE MODEL

V3300-BF-TCM-1	Model FD20C6H
	Model FD20T6H
	Model FD25C6H
	Model FD25T6H
	Model FD30C6H
	Model FD30T6H

CONTENTS

SECTION	FIG.No.	SECTION	FIG.No.
ENGINE BODY			
CRANKCASE	1		
PISTON & CRANKSHAFT	2		
FLYWHEEL	3		
GEAR CASE	4		
OIL PAN	5		
BALANCER	6		
HEAD & VALVE MECHANISM			
CYLINDER HEAD	7		
CYLINDER HEAD COVER	8		
CAMSHAFT & IDLE GEAR SHAFT	9		
VALVE & ROCKER ARM	10		
INLET & EXHAUST			
MANIFOLD	11		
INLET PIPE	12		
LUBRICATION			
HYDRAULIC PUMP	13		
OIL COOLER	14		
COOLING			
WATER PUMP	15		
WATER FLANGE & THERMOSTAT	16		
FAN	17		
FUEL			
NOZZLE HOLDER & PIPING	18		
NOZZLE HOLDER (INNER PARTS)	19		
INJECTION PUMP MOUNT	20		
INJECTION PUMP (INNER PARTS)	21		
INJECTION PUMP HOUSING	22		
ELECTRICAL			
GOVERNOR	23		
FORK LEVER (GOVERNOR)	24		
FUEL FILTER	25		
STARTER MOUNT	26		
STARTER (INNER PARTS)	27		
ALTERNATOR & PULLEY	28		
ALTERNATOR (INNER PARTS)	29		
GLOW PLUG & OTHER PARTS	30		
PARTS NUMBER INDEX	1~3		

FIG. 1 CRANKCASE

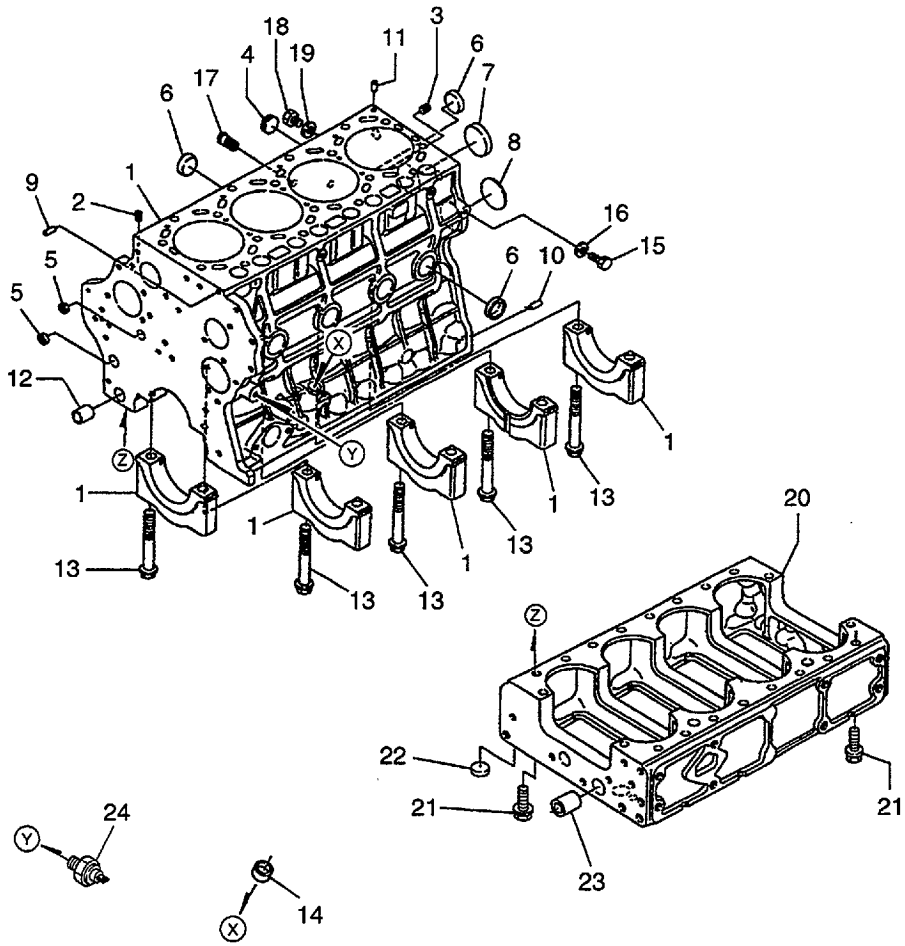


FIG.1

Item No.	Part No.	Mark	Description	Req'd	Remarks : serial No.
1	BN-1C010-01010		CRANKCASE	1	INC.2-13
2	BN-15521-96020		PLUG	2	
3	BN-1C010-96010		PLUG	1	
4	BN-16683-96020		PLUG	1	
5	BN-15261-03370		CAP,SEALING	4	
6	BN-15221-03380		CAP,SEALING	9	
7	BN-15221-03390		CAP,SEALING	1	
8	BN-1C010-96160		PLUG,EXPANSION	1	
9	BN-05012-00822		PIN,STRAIGHT	1	
10	BN-05012-01020		PIN,STRAIGHT	4	
11	BN-15221-33650		PIN	2	
12	BN-1C010-33640		PIN	1	
13	BN-1C010-04560		BOLT	10	
14	BN-15261-03370		CAP,SEALING	1	
15	BN-15221-33610		PLUG	1	
16	BN-15021-33660		GASKET	1	
17	BN-1C010-37110		JOINT	1	
18	BN-06311-55030		PLUG	1	
19	BN-04714-00300		GASKET	1	
20	BN-1C010-01123		CRANKCASE	1	
21	BN-01774-51030		BOLT	16	
22	BN-15221-03380		CAP,SEALING	1	
23	BN-1C010-33650		PIN	1	
24	BN-15531-39010		SWITCH,OIL	1	

FIG. 2 PISTON & CRANKSHAFT

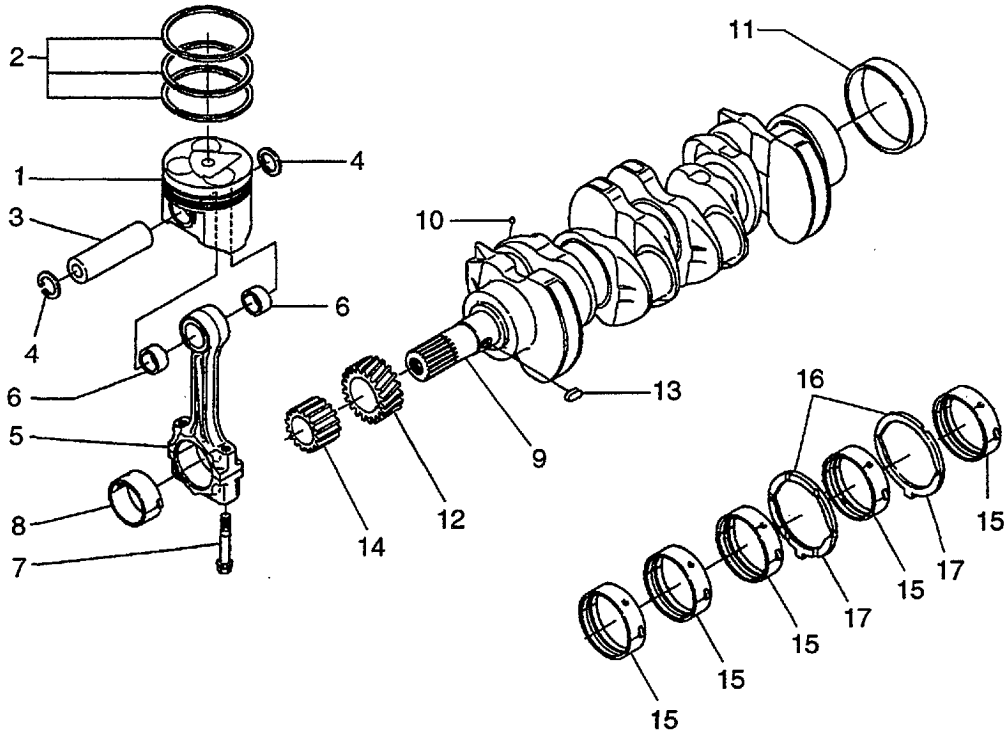


FIG.2

Item No.	Part No.	Mark	Description	Req'd	Remarks : serial No.
1	BN-1C011-21110		PISTON	4	STD
-	BN-1C011-21910		PISTON	4	+0.5mm
2	BN-1C011-21050		RING,PISTON	4	STD
-	BN-1C011-21090		RING,PISTON	4	+0.5mm
3	BN-1C010-21310		PIN,PISTON	4	
4	BN-04611-00300		CIRCLIP	8	
5	BN-1C020-22010		ROD,CONNECTING	4	INC.6-8
6	BN-1C010-21980		BUSHING	8	
7	BN-1C010-22140		BOLT	8	
8	BN-1C020-22312		METAL,CRANKPIN	4	STD
-	BN-1C020-22960		METAL,CRANKPIN	4	-0.2mm
-	BN-1C020-22970		METAL,CRANKPIN	4	-0.4mm
9	BN-1C020-23012		CRANKSHAFT	1	INC.10-14
10	BN-07715-00401		BALL	4	
11	BN-1C010-23300		SLEEVE	1	
12	BN-1C010-24112		GEAR	1	
13	BN-05712-00515		KEY,FEATHER	1	
14	BN-1C010-35630		GEAR,OIL PUMP	1	
15	BN-1C020-23470		SET,METAL,CRANKSHAFT	5	STD
-	BN-1C020-23910		SET,METAL,CRANKSHAFT	5	-0.2mm
-	BN-1C020-23920		SET,METAL,CRANKSHAFT	5	-0.4mm
16	BN-1C010-23530		METAL,SIDE	2	STD
-	BN-1C010-23950		METAL,SIDE	2	+0.2mm
-	BN-1C010-23960		METAL,SIDE	2	+0.4mm
17	BN-1C010-23540		METAL,SIDE	2	STD
-	BN-1C010-23970		METAL,SIDE	2	+0.2mm
-	BN-1C010-23980		METAL,SIDE	2	+0.4mm

FIG. 3 FLYWHEEL

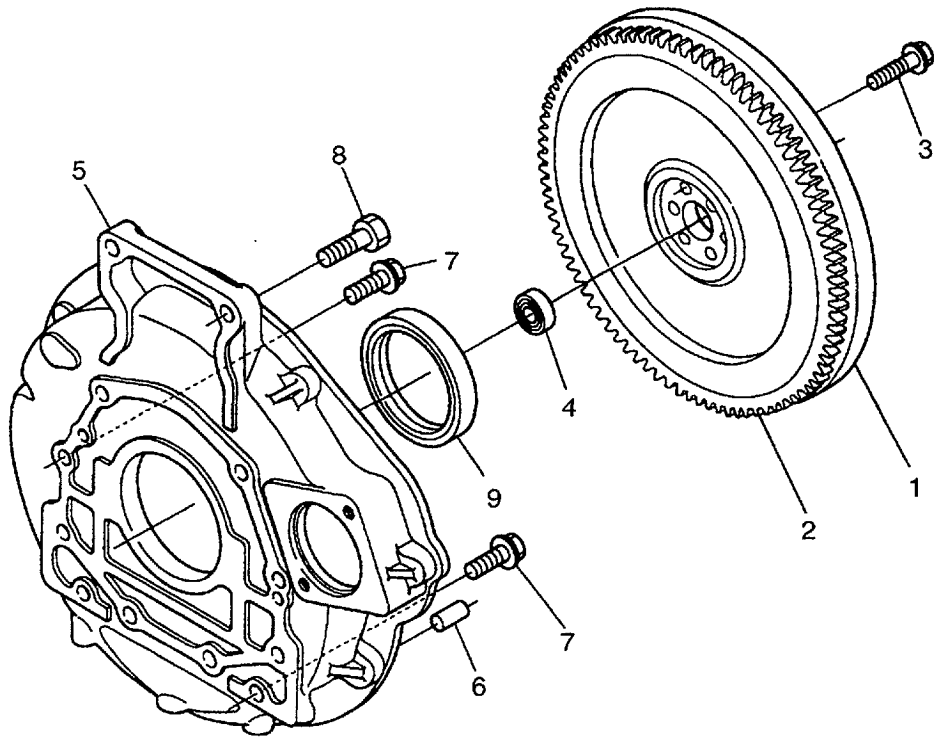


FIG.3

Item No.	Part No.	Mark	Description	Req'd	Remarks : serial No.
1	BN-1K012-25012		FLYWHEEL	1	INC.2
2	BN-15602-63820		GEAR,RING	1	
3	BN-15321-25163		BOLT	7	
4	BN-08143-06302		BEARING	1	
5	BN-1K012-04601		HOUSING	1	
6	BN-68849-66430		PIN	2	
7	BN-01774-51230		BOLT	10	
8	BN-01779-51445		BOLT	2	
9	BN-1C010-04460		SEAL,OIL	1	

FIG. 4 GEAR CASE

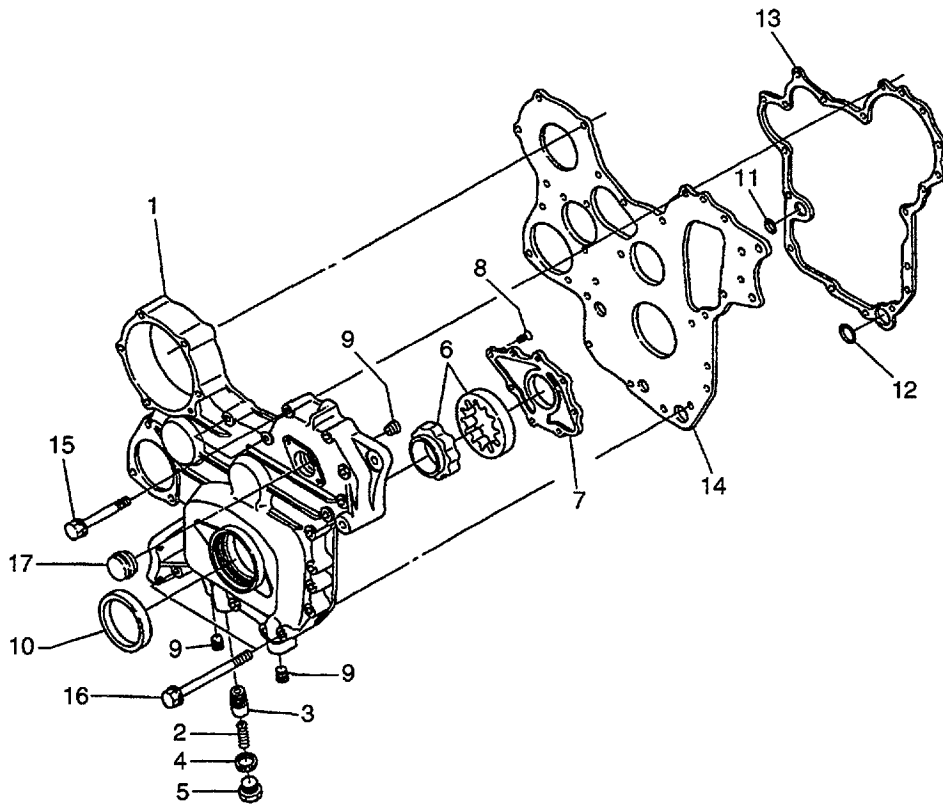


FIG.4

Item No.	Part No.	Mark	Description	Req'd	Remarks : serial No.
1	BN-1C010-04014		CASE,GEAR	1	INC.2-9
2	BN-1C010-36950		SPRING	1	
3	BN-1C010-36920		VALVE,RELIEF	1	
4	BN-15451-96670		GASKET	1	
5	BN-1C010-36960		PLUG	1	
6	BN-1C010-35070		ROTOR,OIL PUMP	1	
7	BN-1C010-35130		COVER	1	
8	BN-03016-50616		SCREW	8	
9	BN-1C010-96020		PLUG	3	
10	BN-1C020-04140		SEAL,OIL	1	
11	BN-04814-00200		O-RING	1	
12	BN-04814-00240		O-RING	1	
13	BN-1C010-04130		GASKET	1	
14	BN-1C010-04162		PLATE	1	
15	BN-01754-50855		BOLT	13	
16	BN-01754-50875		BOLT	2	
17	BN-16264-83342		COVER	1	

FIG. 5 OIL PAN

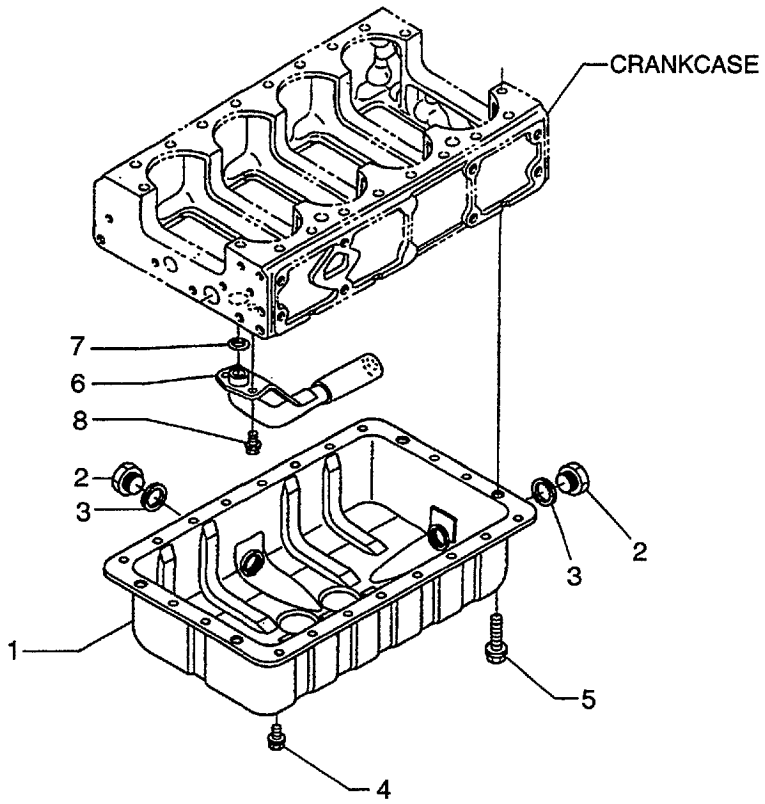


FIG.5

Item No.	Part No.	Mark	Description	Req'd	Remarks : serial No.
1	BN-1C010-01503		PAN,OIL	1	
2	BN-15707-33750		PLUG	2	
3	BN-15451-96670		GASKET	2	
4	BN-01774-51014		BOLT	20	
5	BN-01774-51004		BOLT	4	
6	BN-1C010-32110		FILTER,OIL	1	
7	BN-04814-00220		O-RING	1	
8	BN-01754-50814		BOLT	2	

FIG. 6 BALANCER

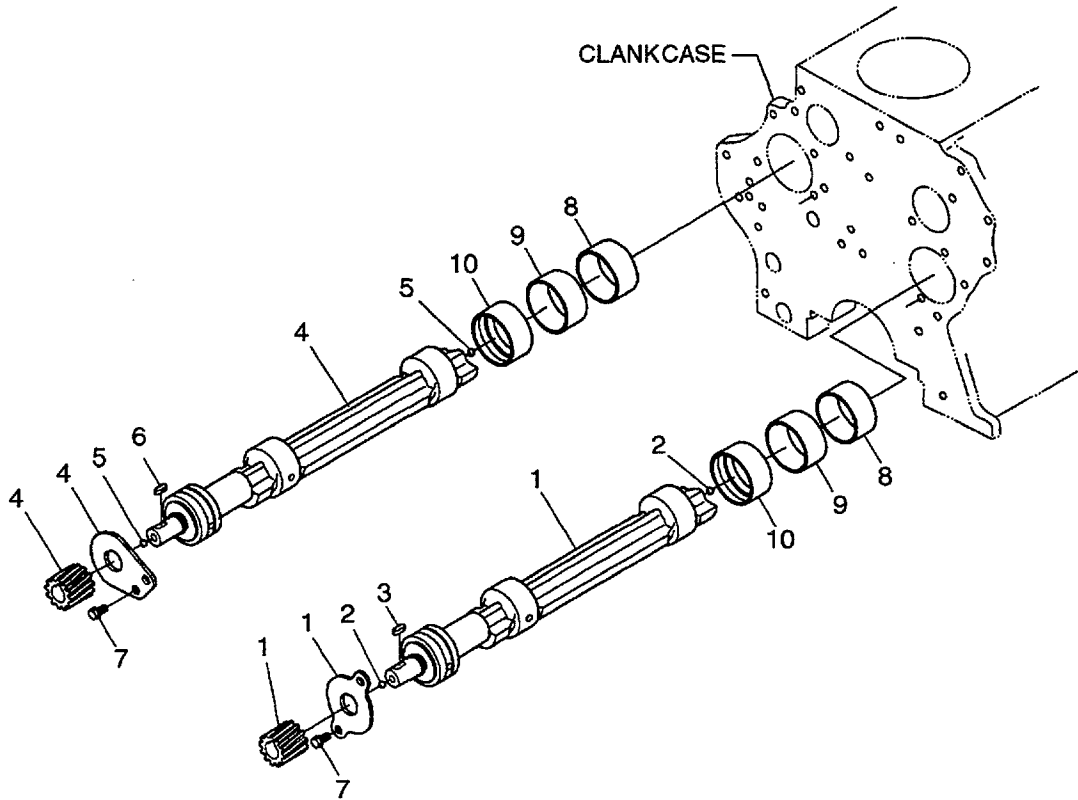


FIG.6

Item No.	Part No.	Mark	Description	Req'd	Remarks : serial No.
1	BN-1C011-26301		SHAFT,BALANCER	1	INC.2,3
2	BN-07715-00401		BALL	2	
3	BN-05712-00415		KEY,FEATHER	1	
4	BN-1C011-26401		SHAFT,BALANCER	1	INC.5,6
5	BN-07715-00401		BALL	2	
6	BN-05712-00415		KEY,FEATHER	1	
7	BN-01754-50816		BOLT	4	
8	BN-1C011-26970		METAL	2	
9	BN-1C011-26980		METAL	2	
10	BN-1C011-26990		METAL	2	

FIG. 7 CYLINDER HEAD

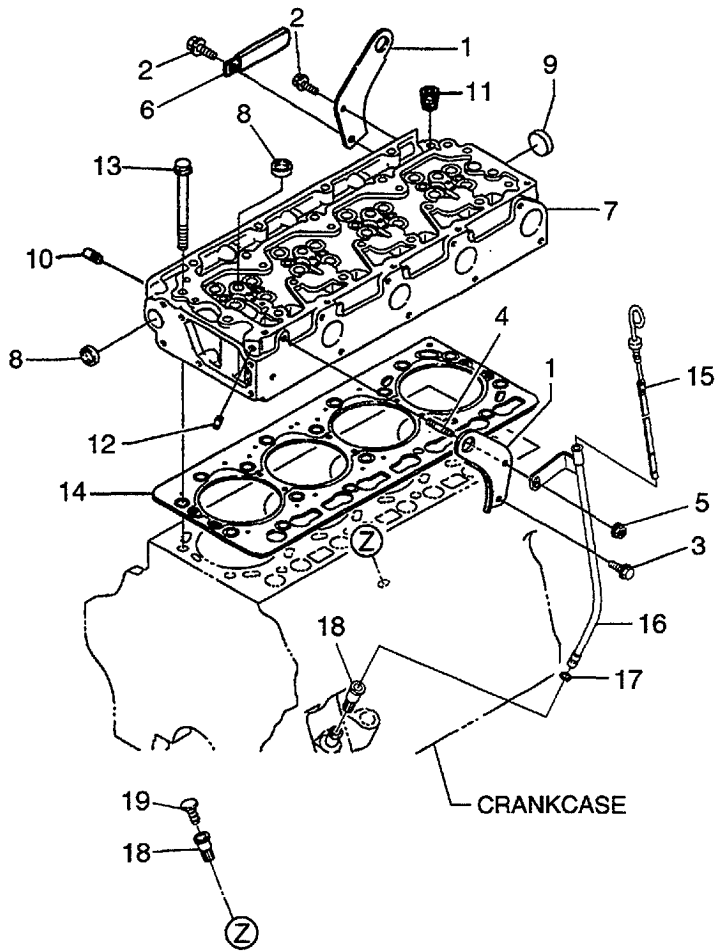


FIG.7

Item No.	Part No.	Mark	Description	Req'd	Remarks : serial No.
1	BN-15471-01740		HOOK,ENGINE	2	
2	BN-01754-50814		BOLT	2	
3	BN-01754-50820		BOLT	1	
4	BN-15221-91530		STUD	1	
5	BN-02751-50080		NUT	1	
6	BN-12234-67580		CLAMP	1	
7	BN-1C010-03023		HEAD,CYLINDER	1	INC.8-11,FIG.10-ITEM 1-13
8	BN-15221-03370		CAP,SEALING	5	
9	BN-15221-03490		CAP,SEALING	1	
10	BN-15261-96011		PLUG	1	
11	BN-15521-96020		PLUG	1	
12	BN-15841-96020		PLUG	1	
13	BN-1C010-03450		BOLT	18	
14	BN-1C020-03310		GASKET	1	0.80mm
-	BN-1C020-03600		GASKET	1	0.90mm
-	BN-1C020-03610		GASKET	1	0.95mm
15	BN-1K011-36411		GAUGE,OIL	1	
16	BN-1K011-36501		GUIDE	1	INC.17
17	BN-04814-00090		O-RING	1	
18	BN-1C010-36422		GUIDE	2	
19	BN-1C010-36550		PLUG	1	

FIG. 8 CYLINDER HEAD COVER

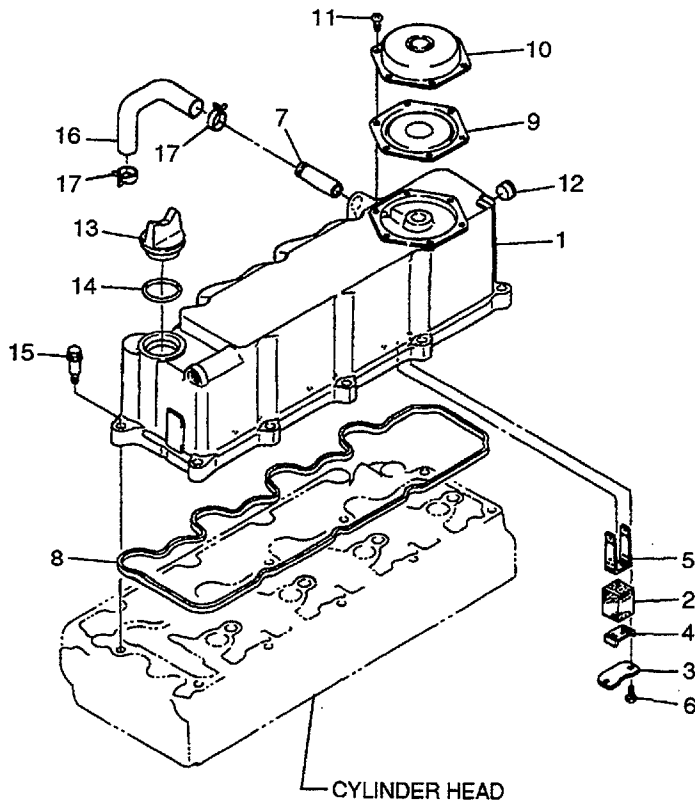


FIG.8

Item No.	Part No.	Mark	Description	Req'd	Remarks : serial No.
1	BN-1C010-14500		COVER,CYLINDER HEAD	1	INC.2-14
2	BN-1C010-05670		ELEMENT	3	
3	BN-1C010-05370		SHIELD	3	
4	BN-1C010-05140		PLATE	3	
5	BN-1C010-05150		PLATE	3	
6	BN-03054-50408		SCREW	6	
7	BN-16241-05550		JOINT	1	
8	BN-1C010-14520		GASKET	1	
9	BN-1C010-05200		VALVE	1	
10	BN-1C010-05120		COVER	1	
11	BN-03054-50508		SCREW	6	
12	BN-06311-85016		CAP,SEALING	2	
13	BN-15852-33140		PLUG,OIL FILLER	1	
14	BN-04811-50300		O-RING	1	
15	BN-1C010-91020		BOLT	10	
16	BN-1C010-05510		TUBE	1	
17	BN-16241-33510		BAND	2	

FIG. 9 CAMSHAFT & IDLE GEAR SHAFT

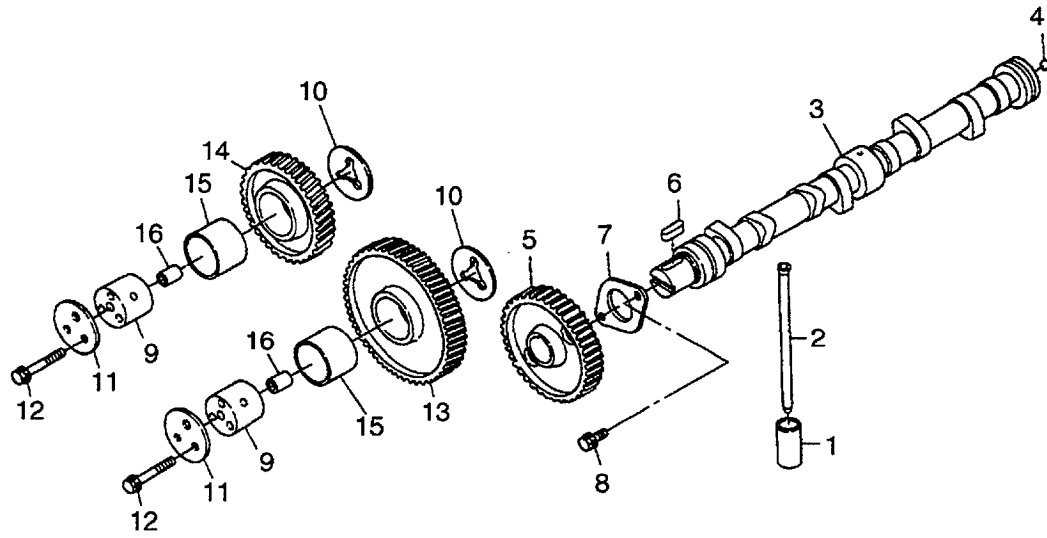


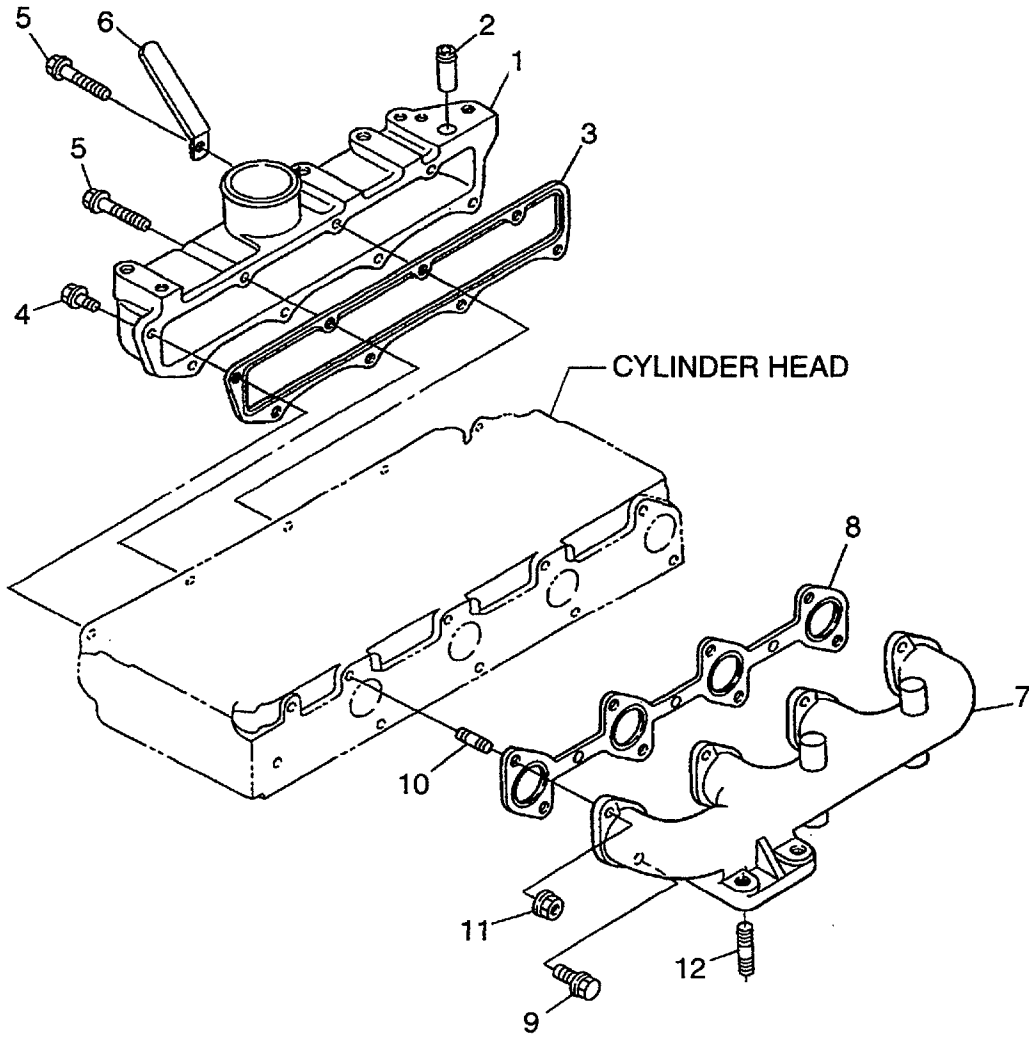
FIG.9

Item No.	Part No.	Mark	Description	Req'd	Remarks : serial No.
1	BN-15601-15550		TAPPET	8	
2	BN-1C010-15110		ROD,PUSH	8	
3	BN-1C010-16012		CAMSHAFT	1	INC.4-7
4	BN-07715-01605		BALL	1	
5	BN-1C010-16512		GEAR,CAM	1	
6	BN-05712-00520		KEY,FEATHER	1	
7	BN-1C010-16270		STOPPER	1	
8	BN-01754-50816		BOLT	2	
9	BN-1C010-24250		SHAFT,IDLE GEAR	2	
10	BN-1C010-24360		COLLAR	2	
11	BN-1C010-24370		COLLAR	2	
12	BN-01754-50855		BOLT	6	
13	BN-1C010-24012		GEAR,IDLE	1	INC.15
14	BN-1C010-24022		GEAR,IDLE	1	INC.15
15	BN-1C010-24982		BUSHING	2	
16	BN-1C010-24520		PIN	2	

FIG.10

Item No.	Part No.	Mark	Description	Req'd	Remarks : serial No.
A	BN-1C010-03023		CYLINDER HEAD ASSY	1	INC.1-13,FIG.7-ITEM 8-11
1	BN-16241-13540		GUIDE,INLET VALVE	8	
2	BN-17321-13560		GUIDE,EXHAUST VALVE	4	
3	BN-1C010-13110		VALVE,INLET	8	
4	BN-1C010-13120		VALVE,EXHAUST	4	
5	BN-1C010-13240		SPRING	8	
6	BN-15221-13240		SPRING	4	
7	BN-16241-13330		RETAINER	8	
8	BN-15221-13330		RETAINER	4	
9	BN-15261-13360		COLLET	8	SET
10	BN-15221-13980		COLLET	4	SET
11	BN-1C010-13150		SEAL	8	
12	BN-1C010-13160		SEAL	4	
13	BN-1C010-13482		SHAFT	4	
14	BN-1C010-14050		SHAFT	1	INC.15
15	BN-03410-00808		SCREW,SET	2	
16	BN-1C010-14350		BRACKET	4	
17	BN-05411-00528		PIN,SPRING	1	
18	BN-1C010-14430		WASHER	2	
19	BN-04612-00160		CIRCLIP	2	
20	BN-1C020-14310		SPRING	3	
21	BN-1C010-14020		ROCKER ARM	4	INC.22,23
22	BN-15521-14230		SCREW,ADJUSTING	4	
23	BN-15021-14240		NUT	4	
24	BN-1C010-14150		ROCKER ARM	4	INC.25,26
25	BN-15521-14230		SCREW,ADJUSTING	4	
26	BN-15021-14240		NUT	4	
27	BN-01774-51060		BOLT	4	
28	BN-1C020-13460		ARM	4	INC.29,30
29	BN-1C010-14280		SCREW,ADJUSTMENT	4	
30	BN-16241-14240		NUT	4	
31	BN-1C010-13490		PAD	4	
32	BN-15221-13280		CAP	4	

FIG. 11 MANIFOLD



Item No.	Part No.	Mark	Description	Req'd	Remarks : serial No.
1	BN-1C010-11770		MANIFOLD,INLET	1	INC.2
2	BN-16241-05550		JOINT	1	
3	BN-1C010-11820		GASKET	1	
4	BN-01754-50820		BOLT	5	
5	BN-01754-50865		BOLT	3	
6	BN-12234-67580		CLAMP	1	
7	BN-1C010-12310		MANIFOLD,EXHAUST	1	
8	BN-1C010-12352		GASKET	1	
9	BN-01754-50820		BOLT	4	
10	BN-15221-91530		STUD	4	
11	BN-02751-50080		NUT	4	
12	BN-01517-61030		STUD	4	

FIG. 12 INLET PIPE

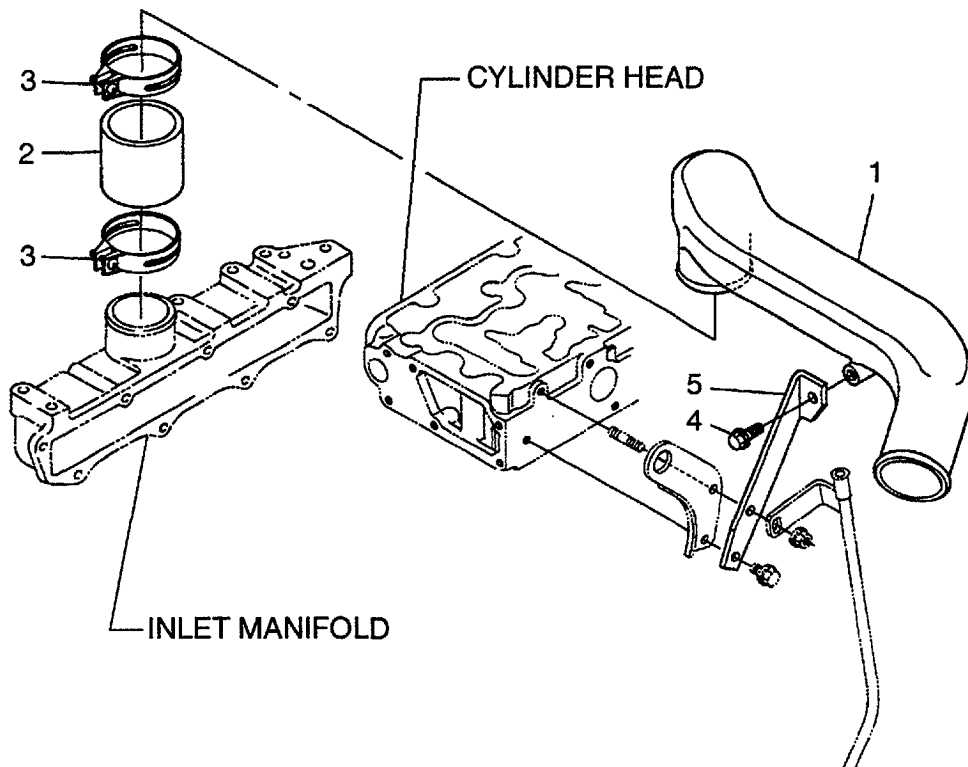


FIG.12

Item No.	Part No.	Mark	Description	Req'd	Remarks : serial No.
1	BN-1K012-11630		PIPE,INLET	1	
2	BN-1K012-11640		PIPE,INLET	1	
3	BN-68811-42270		BAND	2	
4	BN-01754-50820		BOLT	2	
5	BN-1K012-11740		STAY	1	

FIG. 13 HYDRAULIC PUMP

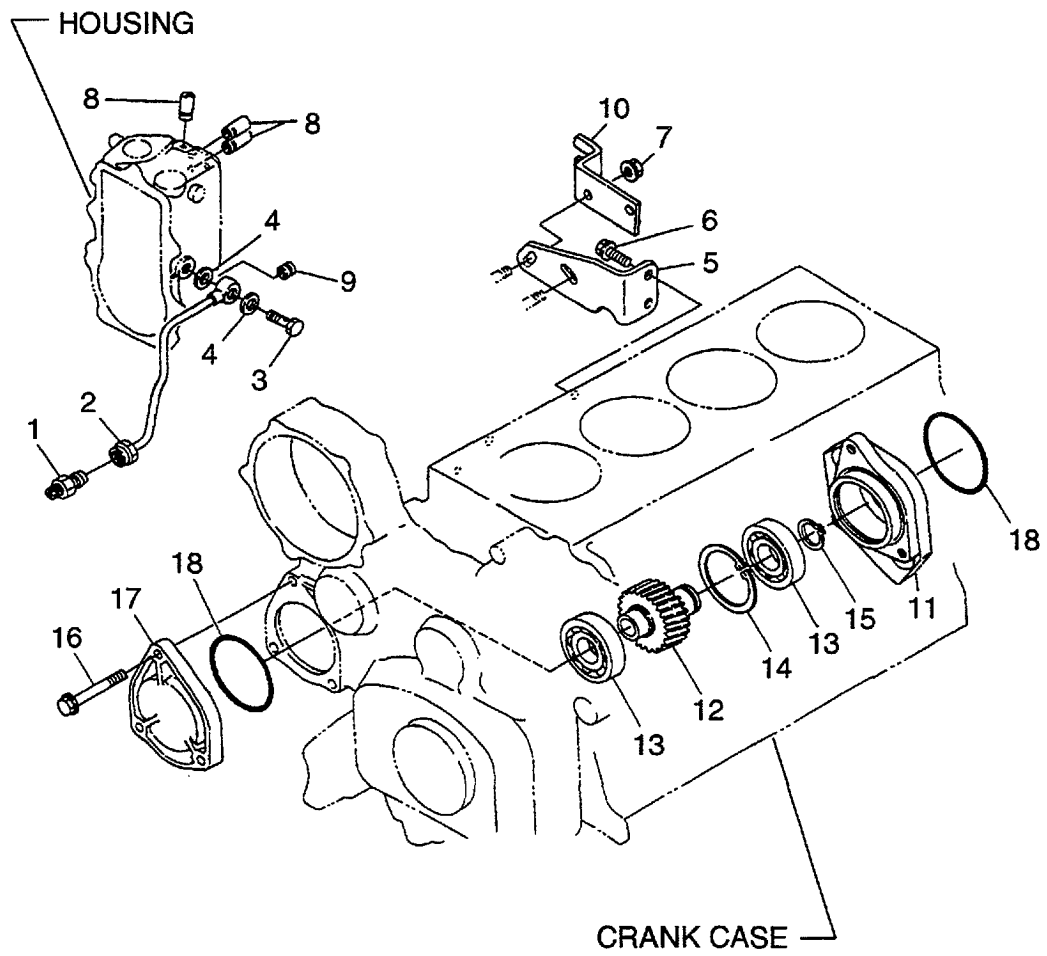
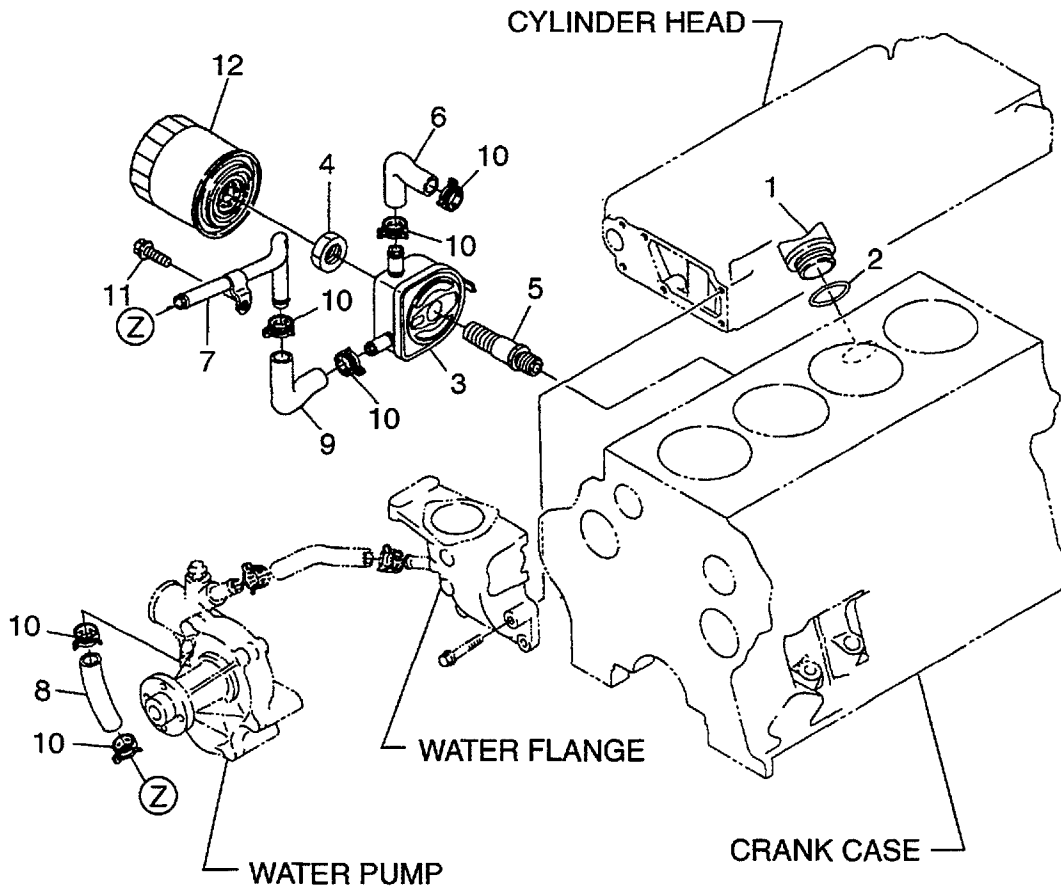


FIG.13

Item No.	Part No.	Mark	Description	Req'd	Remarks : serial No.
1	BN-15707-33360		JOINT	1	
2	BN-1C010-33320		PIPE,I.P OIL	1	
3	BN-17371-95800		BOLT,EYE	1	
4	BN-15471-96650		GASKET	2	
5	BN-1C010-51620		BRACKET,PUMP	1	
6	BN-01754-50816		BOLT	2	
7	BN-02751-50080		NUT	2	
8	BN-16221-54420		CAP	3	
9	BN-15841-54270		CAP	1	
10	BN-1K011-57562		BRACKET,ACCEL,WIRE	1	
11	BN-1G522-83062		BASE	1	INC.12-15
12	BN-1G522-83190		GEAR	1	
13	BN-08103-06206		BEARING	2	
14	BN-04611-00620		CIRCLIP	1	
15	BN-04612-00300		CIRCLIP	1	
16	BN-01754-50875		BOLT	3	
17	BN-1G521-83221		COVER	1	
18	BN-1C010-96960		O-RING	2	

FIG. 14 OIL COOLER



Item No.	Part No.	Mark	Description	Req'd	Remarks : serial No.
1	BN-15852-33140		PLUG,OIL FILLER	1	
2	BN-04811-50300		O-RING	1	
3	BN-1C010-37010		COOLER,OIL	1	
4	BN-1C010-32280		NUT	1	
5	BN-1C010-32290		JOINT	1	
6	BN-1C010-37150		PIPE	1	
7	BN-1C010-37160		PIPE	1	
8	BN-1C010-37172		PIPE	1	
9	BN-1C010-37182		PIPE	1	
10	BN-09318-88200		CLAMP	6	
11	BN-01754-50812		BOLT	1	
12	BN-1C020-32430		FILTER,OIL	1	

FIG. 15 WATER PUMP

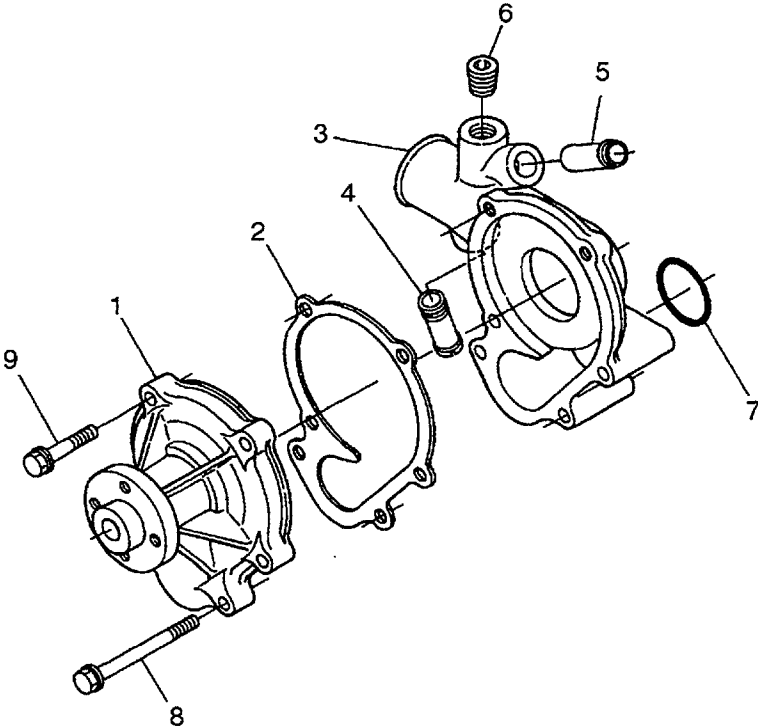


FIG.15

Item No.	Part No.	Mark	Description	Req'd	Remarks : serial No.
1	BN-1C010-73030		PUMP,WATER	1	
2	BN-1C010-73430		GASKET	1	
3	BN-1C010-73060		SUPPORT	1	INC.4-6
4	BN-1C010-37110		JOINT	1	
5	BN-16241-05550		JOINT	1	
6	BN-16241-96020		PLUG	1	
7	BN-04814-00420		O-RING	1	
8	BN-01754-50880		BOLT	4	
9	BN-01754-50830		BOLT	2	

FIG. 16 WATER FLANGE & THERMOSTAT

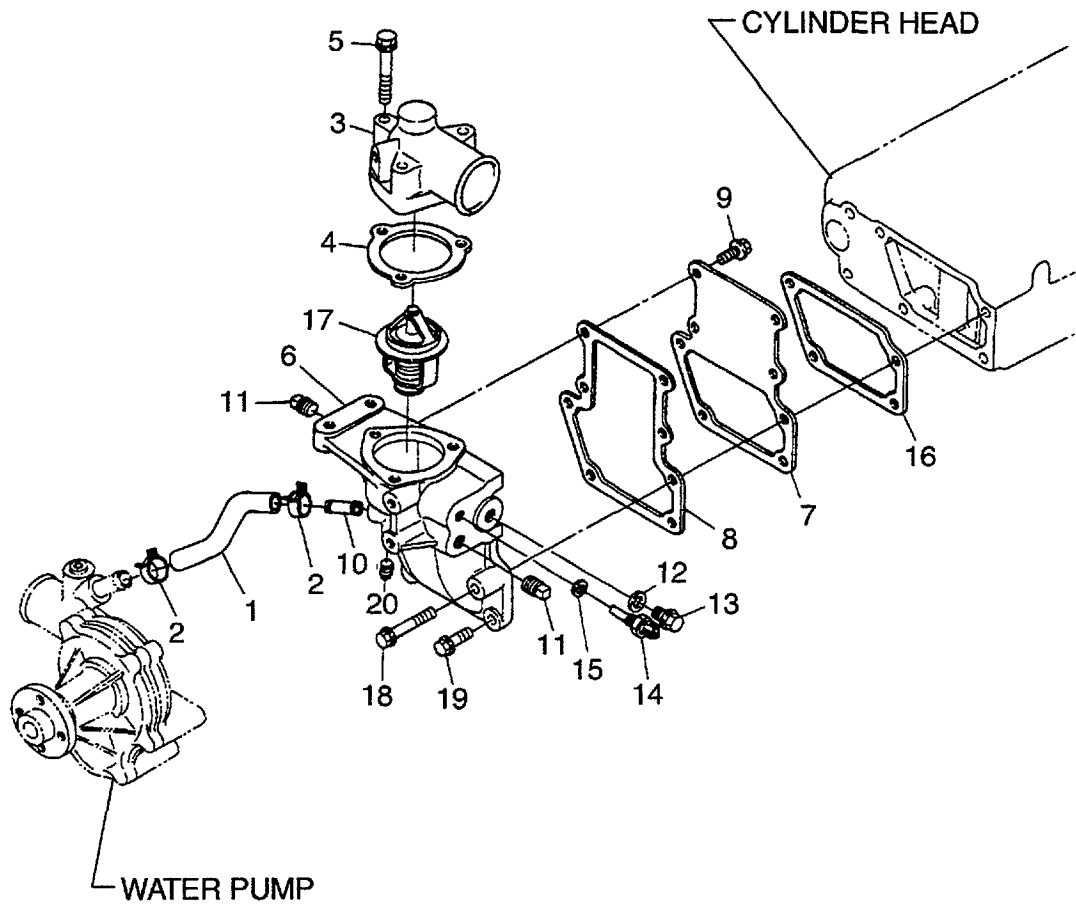


FIG.16

Item No.	Part No.	Mark	Description	Req'd	Remarks : serial No.
1	BN-1C010-73350		PIPE	1	
2	BN-09318-88200		CLAMP	2	
3	BN-1K011-73261		COVER,THERMOSTAT	1	
4	BN-1C010-73270		GASKET	1	
5	BN-01754-50850		BOLT	3	
6	BN-1G522-72703		FLANGE,WATER	1	INC.7-10,20
7	BN-1C010-72810		COVER	1	
8	BN-1C010-72922		GASKET	1	
9	BN-01754-50816		BOLT	4	
10	BN-1C010-37110		JOINT	1	
11	BN-06312-10030		PLUG	2	
12	BN-15109-33660		PACKING	1	
13	BN-15109-33630		PLUG	1	
14	BN-16415-83041		SENSOR	1	
15	BN-04717-01200		WASHER,RUBBER	1	
16	BN-1C010-72820		GASKET	1	
17	BN-1C010-73010		THERMOSTAT	1	
18	BN-01754-50850		BOLT	1	
19	BN-01754-50825		BOLT	3	
20	BN-16241-96020		PLUG	1	

FIG. 17 FAN

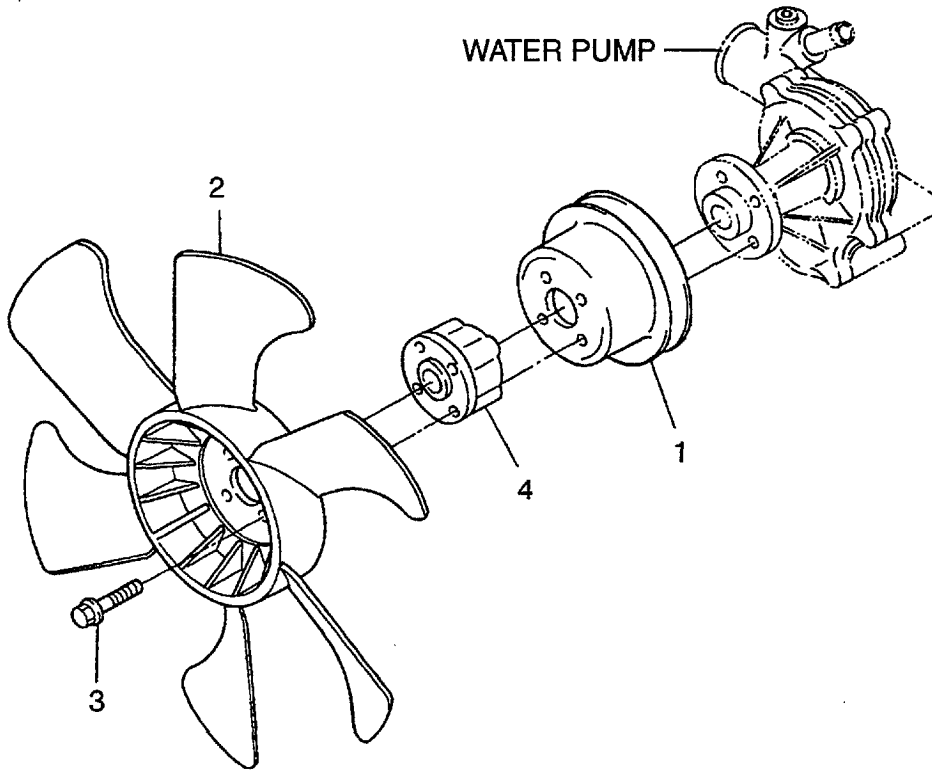


FIG.17

Item No.	Part No.	Mark	Description	Req'd	Remarks : serial No.
1	BN-1K011-74250		PULLEY,FAN	1	
2	BN-1K011-74111		FAN	1	
3	BN-01754-50840		BOLT	4	
4	BN-1K011-74151		COLLAR	1	

FIG. 18 NOZZLE HOLDER & PIPING

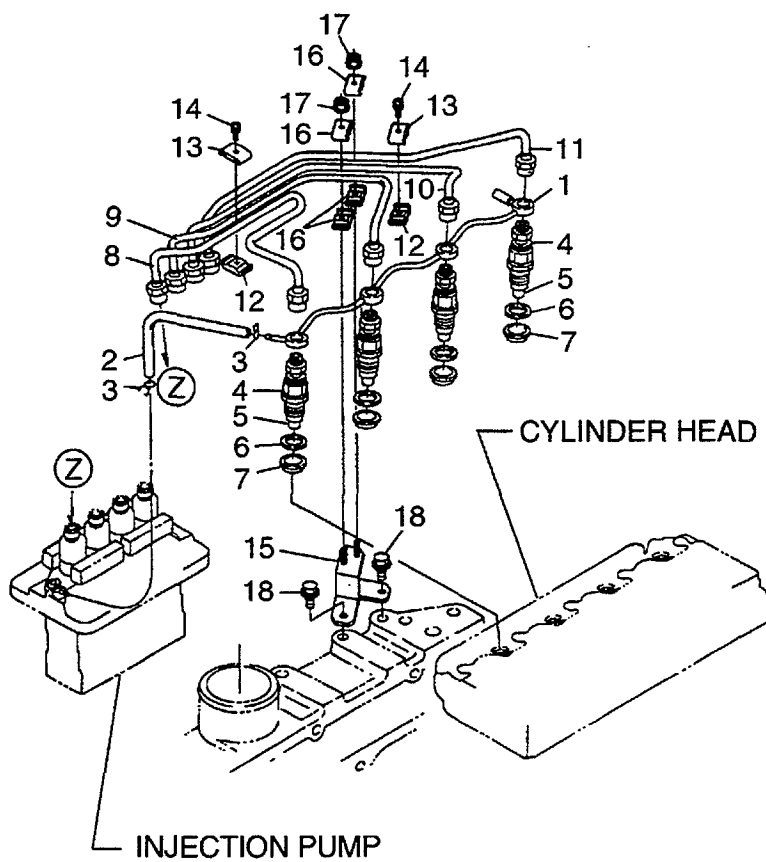


FIG.18

Item No.	Part No.	Mark	Description	Req'd	Remarks : serial No.
1	BN-1K012-42500		PIPE	1	
A1	BN-1C010-42400		PIPE ASSY	1	INC.2,3
2	BN-09661-40170		TUBE	1	
3	BN-14971-42750		CLIP	2	
K	BN-1C010-53900		NOZZLE HOLDER KIT	4	INC.4-7
4	BN-1C010-53000	*	NOZZLE HOLDER	4	SEE FIG.19
5	- - -	*	PIECE,NOZZLE	4	SEE FIG.19
6	BN-15841-53622	*	GASKET	4	
7	BN-19077-53650	*	SEAL,HEAT	4	
8	BN-1C010-53710		PIPE,INJECTION	1	
9	BN-1C010-53720		PIPE,INJECTION	1	
10	BN-1C010-53730		PIPE,INJECTION	1	
11	BN-1C010-53740		PIPE,INJECTION	1	
12	BN-15841-53850		CLAMP	2	
13	BN-15841-53860		CLAMP	2	
14	BN-03024-50520		SCREW & WASHER	2	
15	BN-1K012-53890		STAY	1	
16	BN-15841-53860		CLAMP	4	
17	BN-02761-50050		NUT	2	
18	BN-01774-61020		BOLT	2	

FIG. 19 NOZZLE HOLDER (INNER PARTS)

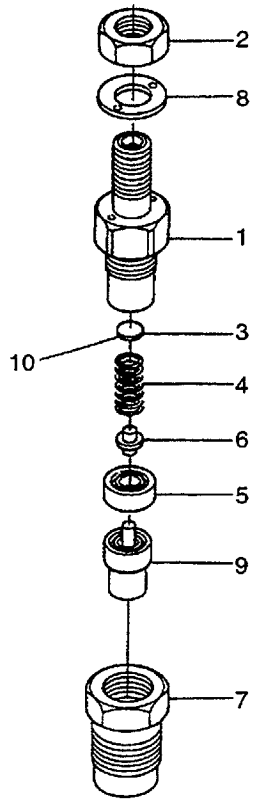


FIG.19

Item No.	Part No.	Mark	Description	Req'd	Remarks : serial No.
A1	BN-1C010-53000	*	NOZZLE HOLDER ASSY	4	INC.1-9
A2	BN-1C010-53010	*	NOZZLE HOLDER SUB ASSY	4	INC.1-8
1	- - -	*	BODY	4	
2	BN-15841-92030	*	NUT	4	
3	BN-15841-53230	*	WASHER,ADJUSTING	4	
4	BN-1C010-53170	*	SPRING,NOZZLE	4	
5	BN-15841-53350	*	PIECE,DISTANCE	4	
6	BN-15841-53160	*	ROD,PUSH	4	
7	BN-16475-53280	*	NUT	4	
8	BN-15841-94040	*	WASHER	4	
9	BN-1C010-53610	*	PIECE,NOZZLE	4	
A3	BN-15841-98100		ADJUST WASHER ASSY	4	INC.10
10	BN-15841-53230		WASHER	4	t=0.900mm
-	BN-15841-98510		WASHER	4	t=0.925mm
-	BN-15841-98520		WASHER	4	t=0.950mm
-	BN-15841-98530		WASHER	4	t=0.975mm
-	BN-15841-98540		WASHER	4	t=1.000mm
-	BN-15841-98550		WASHER	4	t=1.025mm
-	BN-15841-98560		WASHER	4	t=1.050mm
-	BN-15841-98570		WASHER	4	t=1.075mm
-	BN-15841-98580		WASHER	4	t=1.100mm
-	BN-15841-98590		WASHER	4	t=1.125mm
-	BN-15841-98600		WASHER	4	t=1.150mm
-	BN-15841-98610		WASHER	4	t=1.175mm
-	BN-15841-98620		WASHER	4	t=1.200mm
-	BN-15841-98630		WASHER	4	t=1.225mm
-	BN-15841-98640		WASHER	4	t=1.250mm
-	BN-15841-98650		WASHER	4	t=1.275mm
-	BN-15841-98660		WASHER	4	t=1.300mm
-	BN-15841-98670		WASHER	4	t=1.325mm
-	BN-15841-98680		WASHER	4	t=1.350mm
-	BN-15841-98690		WASHER	4	t=1.375mm
-	BN-15841-98700		WASHER	4	t=1.400mm
-	BN-15841-98710		WASHER	4	t=1.425mm
-	BN-15841-98720		WASHER	4	t=1.450mm
-	BN-15841-98730		WASHER	4	t=1.475mm
-	BN-15841-98740		WASHER	4	t=1.500mm
-	BN-15841-98750		WASHER	4	t=1.525mm
-	BN-15841-98760		WASHER	4	t=1.550mm
-	BN-15841-98770		WASHER	4	t=1.575mm
-	BN-15841-98780		WASHER	4	t=1.600mm
-	BN-15841-98790		WASHER	4	t=1.625mm
-	BN-15841-98800		WASHER	4	t=1.650mm
-	BN-15841-98810		WASHER	4	t=1.675mm
-	BN-15841-98820		WASHER	4	t=1.700mm
-	BN-15841-98830		WASHER	4	t=1.725mm
-	BN-15841-98840		WASHER	4	t=1.750mm
-	BN-15841-98850		WASHER	4	t=1.775mm
-	BN-15841-98860		WASHER	4	t=1.800mm
-	BN-15841-98870		WASHER	4	t=1.825mm

FIG. 19 NOZZLE HOLDER (INNER PARTS)

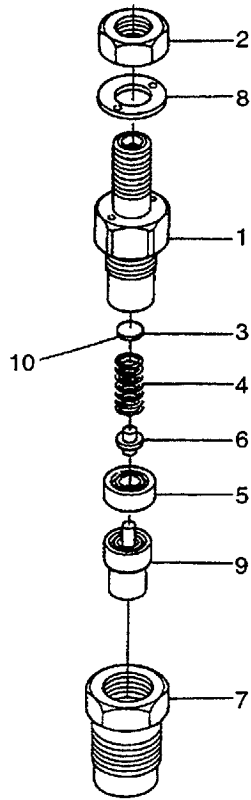
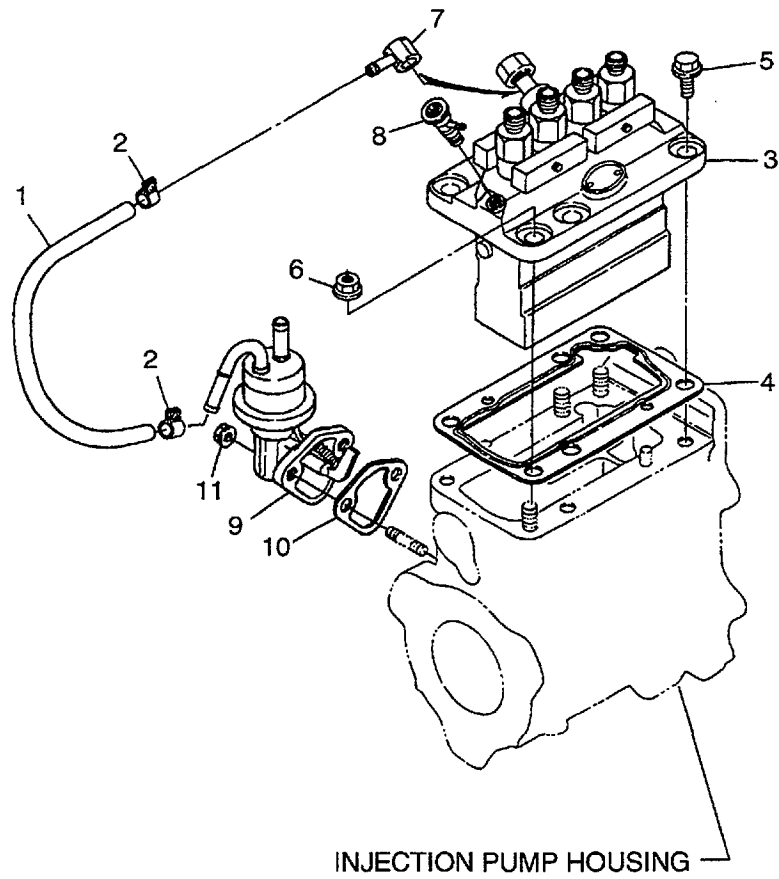


FIG.19

Item No.	Part No.	Mark	Description	Req'd	Remarks : serial No.
10	BN-15841-98880		WASHER	4	t=1.850mm
-	BN-15841-98890		WASHER	4	t=1.875mm
-	BN-15841-98900		WASHER	4	t=1.900mm
-	BN-15841-98910		WASHER	4	t=1.925mm
-	BN-15841-98920		WASHER	4	t=1.950mm

FIG. 20 INJECTION PUMP MOUNT



Item No.	Part No.	Mark	Description	Req'd	Remarks : serial No.
A1	BN-1K011-42010		FUEL TUBE ASSY	1	INC.1,2
1	BN-09661-70150		TUBE	1	
2	BN-14911-42750		CLIP	2	
A2	BN-1K012-50050		INJECTION PUMP UNIT ASSY	1	INC.3-11,FIG.22-ITEM 15-33, FIG.23,FIG.24
3	BN-1K012-51010		INJECTION PUMP	1	SEE FIG.21
4	BN-1C010-52110		SHIM	1	
5	BN-01754-50825		BOLT	3	
6	BN-02751-50080		NUT	3	
7	BN-15401-95690		JOINT	1	
8	BN-14311-60504		COCK	1	
9	BN-1K011-52030		PUMP,FUEL	1	
10	BN-16264-52140		GASKET	1	
11	BN-02751-50060		NUT	2	

FIG. 21 INJECTION PUMP (INNER PARTS)

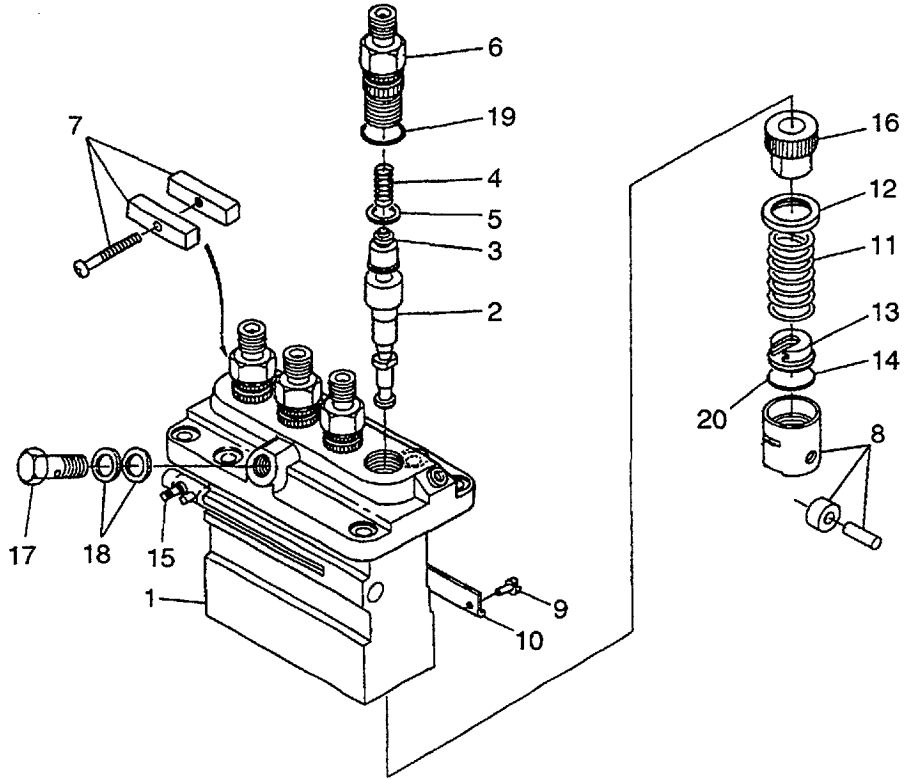
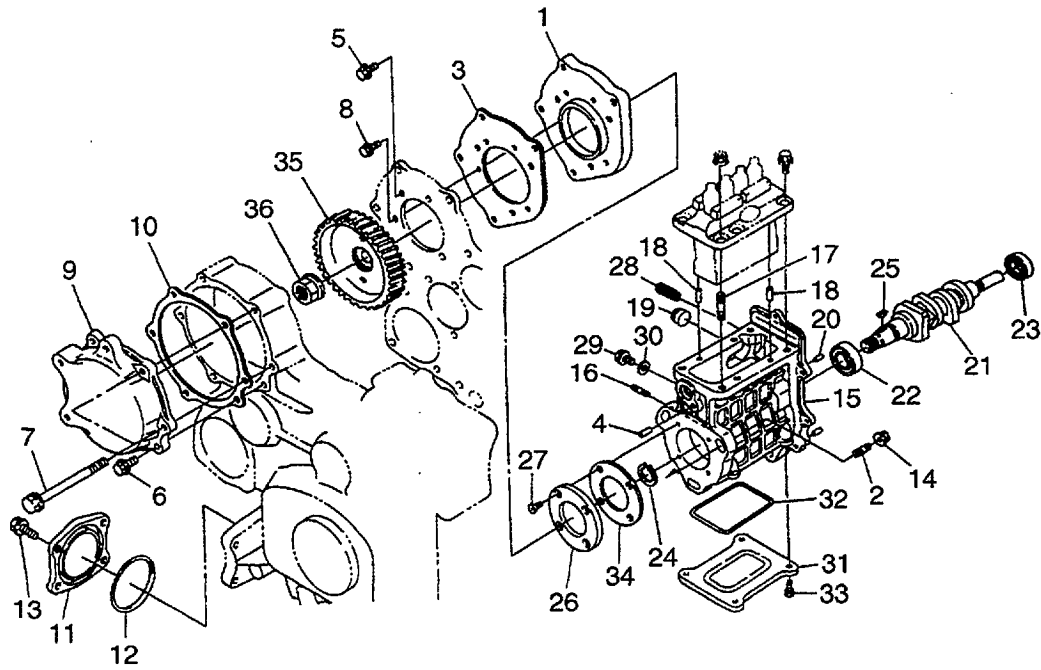


FIG.21

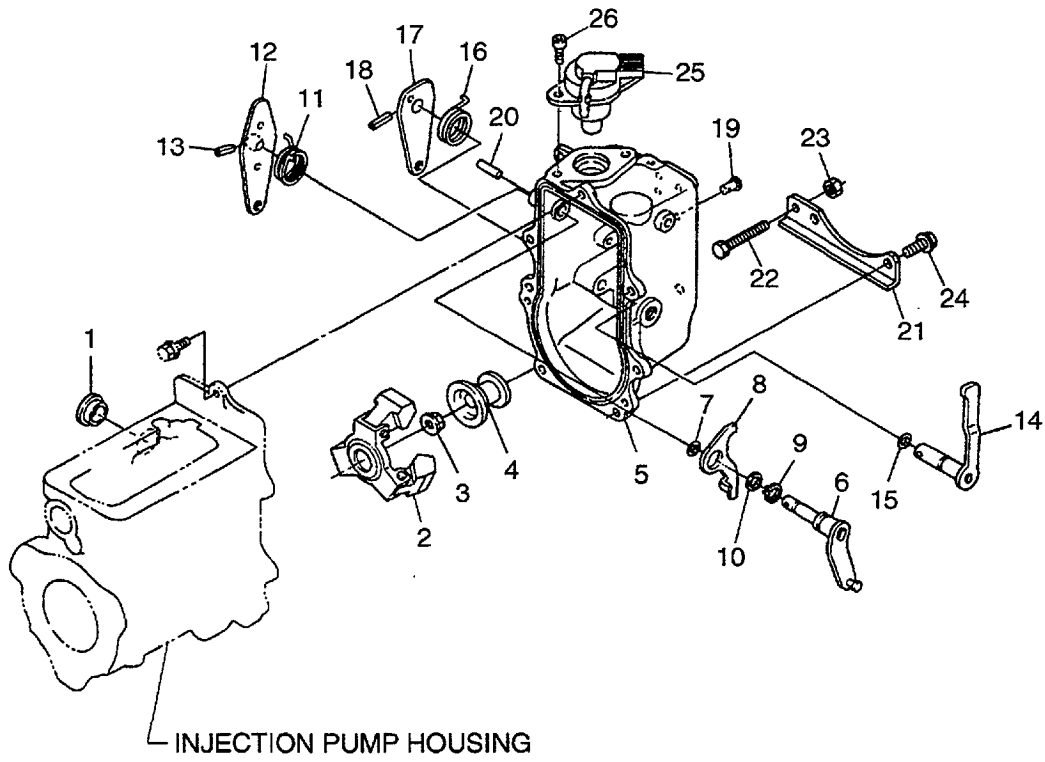
Item No.	Part No.	Mark	Description	Req'd	Remarks : serial No.
1	BN-1K012-51010		PUMP,INJECTION	1	INC.2-19
2	BN-1K012-51050		PLUNGER	4	
3	BN-15221-51030		VALVE,DELIVERY	4	
4	BN-16454-51230		SPRING	4	
5	BN-15221-51240		GASKET	4	
6	BN-16415-51220		HOLDER	4	
7	BN-16475-51610		PLATE,LOCK	2	
8	BN-15221-51070		TAPPET	4	
9	BN-14611-51250		PIN	4	
10	BN-14611-51440		PLATE	2	
11	BN-15221-51280		SPRING	4	
12	BN-15221-51270		SEAT,SPRING	4	
13	BN-15221-51290		SEAT,SPRING	4	
14	BN-14109-51300		SHIM	4	
15	BN-1C010-51060		RACK,CONTROL	1	
16	BN-15221-51382		SLEEVE,CONTROL	4	
17	BN-1C010-51320		SCREW,FOLLOW	1	
18	BN-15401-96650		GASKET	2	
19	BN-14611-51200		O-RING	4	
K	BN-14601-98300		SHIM KIT	4	INC.20
20	BN-14601-98310	*	SHIM	4	t=0.10mm
-	BN-14601-98320	*	SHIM	4	t=0.20mm
-	BN-14601-98330	*	SHIM	4	t=0.25mm
-	BN-14601-98340	*	SHIM	4	t=0.30mm
-	BN-14601-98350	*	SHIM	4	t=0.35mm
-	BN-15221-51490	*	SHIM	4	t=0.40mm
-	BN-14601-98370	*	SHIM	4	t=0.45mm
-	BN-14601-98380	*	SHIM	4	t=0.50mm
-	BN-14601-98390	*	SHIM	4	t=0.55mm
-	BN-14109-51300	*	SHIM	4	t=0.60mm
-	BN-14601-98410	*	SHIM	4	t=0.65mm
-	BN-14601-98420	*	SHIM	4	t=0.70mm
-	BN-14601-98430	*	SHIM	4	t=0.80mm
-	BN-14601-98440	*	SHIM	4	t=0.90mm
-	BN-14601-98450	*	SHIM	4	t=1.00mm
-	BN-14601-98460	*	SHIM	4	t=1.10mm
-	BN-14601-98470	*	SHIM	4	t=1.20mm
-	BN-14601-98480	*	SHIM	4	t=1.30mm
-	BN-14601-98490	*	SHIM	4	t=1.40mm

FIG. 22 INJECTION PUMP HOUSING



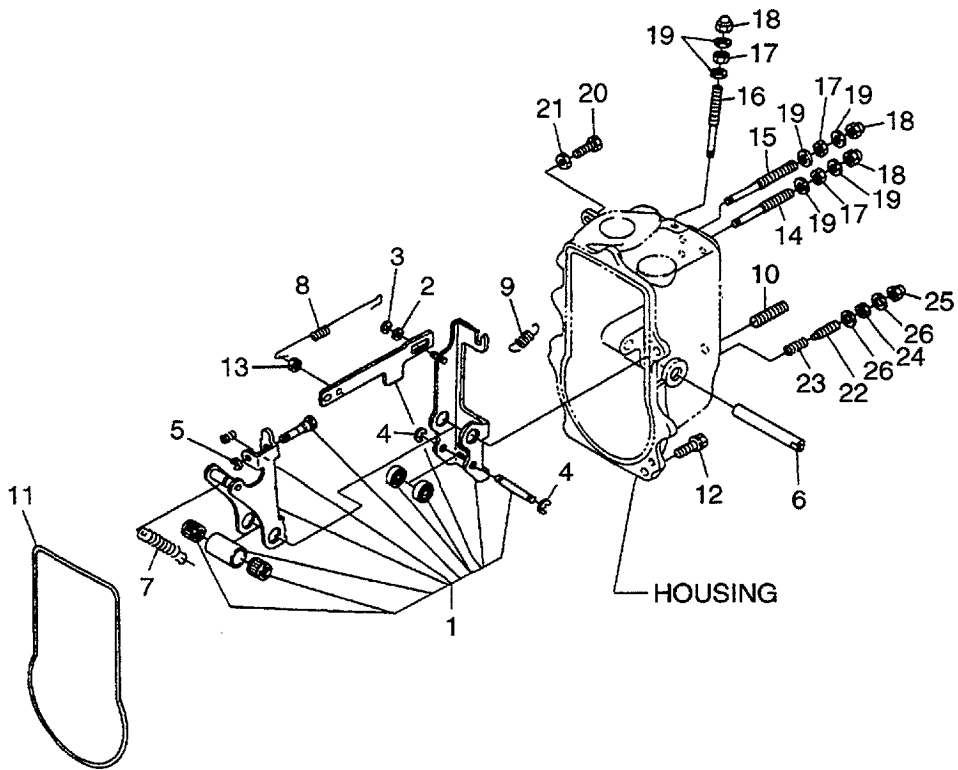
Item No.	Part No.	Mark	Description	Req'd	Remarks : serial No.
1	BN-1C010-51170		BASE,INJECTION PUMP	1	
2	BN-01513-60825		STUD	3	
3	BN-1C010-51180		GASKET	1	
4	BN-05012-00614		PIN	1	
5	BN-01754-50816		BOLT	3	
6	BN-01754-50825		BOLT	1	
7	BN-01754-50875		BOLT	5	
8	BN-01754-50614		BOLT	3	
9	BN-1C010-51650		COVER	1	
10	BN-1C010-51660		GASKET	1	
11	BN-1C010-32880		COVER	1	
12	BN-19202-96830		O-RING	1	
13	BN-01754-50820		BOLT	4	
A	BN-1K012-50050		INJECTION PUMP UNIT ASSY	1	INC.15-33,FIG.20-ITEM 3-11, FIG.23,FIG.24
14	BN-02751-50080		NUT	3	
15	BN-1C010-50800		HOUSING	1	INC.16-20
16	BN-01513-50616		STUD	2	
17	BN-01513-50818		STUD	3	
18	BN-05012-00609		PIN	2	
19	BN-1C010-55140		PLUG	1	
20	BN-05012-00512		PIN	2	
21	BN-1C010-16170		CAMSHAFT,FUEL	1	
22	BN-08153-06304		BEARING	1	
23	BN-08101-06203		BEARING	1	
24	BN-04612-00200		CIRCLIP	1	
25	BN-12331-95230		KEY	1	
26	BN-1C020-16320		STOPPER	1	
27	BN-03016-50616		SCREW	4	
28	BN-03651-50830		SCREW,SET	2	
29	BN-01754-50812		BOLT	2	
30	BN-15021-33660		GASKET	2	
31	BN-1C010-16210		COVER	1	
32	BN-1C010-16220		GASKET	1	
33	BN-13901-91020		BOLT	4	
34	BN-1C010-52130		GASKET	1	
35	BN-1C010-51152		GEAR	1	
36	BN-02776-50140		NUT	1	

FIG. 23 GOVERNOR



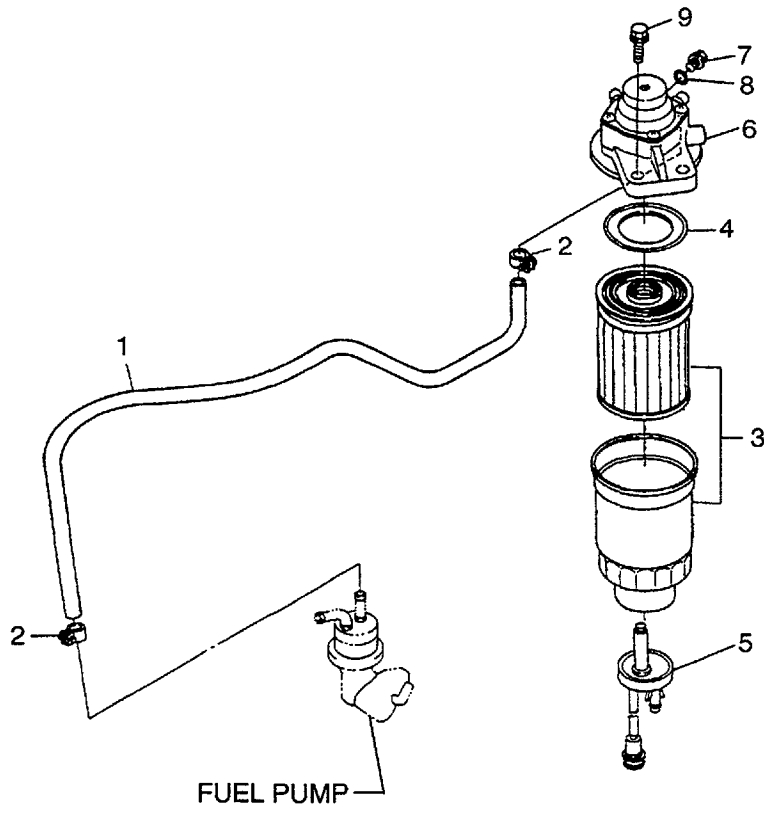
Item No.	Part No.	Mark	Description	Req'd	Remarks : serial No.
A	BN-1K012-50050		INJECTION PUMP UNIT ASSY	1	INC.1-26,FIG.20-ITEM 3-11, FIG.22-ITEM 15-33,FIG.24
1	BN-1C010-56750		COVER	1	
2	BN-1C020-55050		WEIGHT	1	
3	BN-02771-50120		NUT	1	
4	BN-1C020-55452		SLEEVE	1	
5	BN-1K012-55100		HOUSING	1	
6	BN-1K012-56020		LEVER	1	
7	BN-15471-57980		SEAL,OIL	1	
8	BN-1C010-60150		LEVER,STOP	1	
9	BN-04613-50120		CIRCLIP	1	
10	BN-15221-14430		WASHER	1	
11	BN-1C010-57510		SPRING	1	
12	BN-1C010-57150		LEVER,SPEED CONTROL	1	
13	BN-05411-00416		PIN	1	
14	BN-1C010-57700		LEVER,ENGINE STOP	1	
15	BN-04811-10070		O-RING	1	
16	BN-15471-57920		SPRING,RETURN	1	
17	BN-1C010-57620		LEVER,ENGINE STOP	1	
18	BN-05411-00416		PIN	1	
19	BN-15221-56280		PIN	1	
20	BN-1C010-94510		PIN	1	
21	BN-1K012-58570		STAY	1	
22	BN-19202-91010		BOLT	1	
23	BN-02056-50060		NUT	1	
24	BN-01754-50622		BOLT	2	
25	BN-1C010-60014		SOLENOID,STOP	1	
26	BN-01311-10616		BOLT	2	

FIG. 24 FORK LEVER (GOVERNOR)



Item No.	Part No.	Mark	Description	Req'd	Remarks : serial No.
A	BN-1K012-50050		INJECTION PUMP UNIT ASSY	1	INC.1-26,FIG.20-ITEM 3-11, FIG.22-ITEM 15-33,FIG.23
1	BN-1C010-56030		LEVER,FORK	1	INC.2-5
2	BN-04013-60050		WASHER	1	
3	BN-04613-50040		CIRCLIP	1	
4	BN-04613-50050		CIRCLIP	2	
5	BN-04613-50030		CIRCLIP	1	
6	BN-1C010-56150		SHAFT	1	
7	BN-1K012-56410		SPRING	1	
8	BN-1K012-56480		SPRING	1	
9	BN-1C010-57920		SPRING	1	
10	BN-01518-50820		STUD	2	
11	BN-1C010-55770		GASKET	1	
12	BN-01754-50618		BOLT	5	
13	BN-02556-50050		NUT,LOCK	1	
14	BN-1C010-54150		BOLT	1	
15	BN-1C010-54120		BOLT	1	
16	BN-1C010-54120		BOLT	1	
17	BN-15841-92020		NUT	3	
18	BN-15841-92330		NUT	3	
19	BN-15601-96650		GASKET	6	
20	BN-15108-57280		STOPPER	1	
21	BN-02056-50060		NUT	1	
22	BN-15841-54100		BOLT	1	INC.23
23	BN-15841-54260		SPRING	1	
24	BN-15261-92020		NUT	1	
25	BN-15841-54220		NUT	1	
26	BN-15021-33660		GASKET	1	

FIG. 25 FUEL FILTER



Item No.	Part No.	Mark	Description	Req'd	Remarks : serial No.
A1	BN-1K011-42020		TUBE ASSY	1	INC.1,2
1	BN-09661-70625		TUBE	1	
2	BN-14301-42750		CLIP	2	
A2	BN-1K012-43010		FUEL FILTER ASSY	1	INC.3-8
3	BN-1K011-43060		ELEMENT KIT	1	INC.4
4	BN-1K011-43140	*	GASKET	1	
5	BN-1K012-43800		SENSOR	1	
6	BN-1K011-43200		BODY	1	INC.7,8
7	BN-1K011-43280		PLUG	1	
8	BN-14301-43290		O-RING	1	
9	BN-01774-51030		BOLT	2	

FIG. 26 STARTER MOUNT

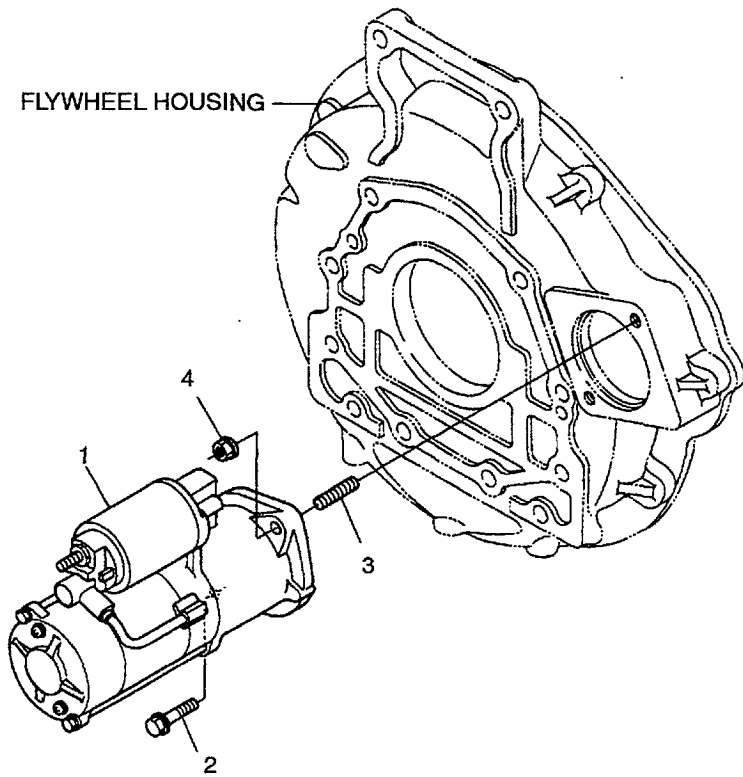


FIG.26

Item No.	Part No.	Mark	Description	Req'd	Remarks : serial No.
1	BN-1K012-63010		STARTER	1	SEE FIG.27
2	BN-01774-51035		BOLT	1	
3	BN-01517-61030		STUD	1	
4	BN-02771-60100		NUT	1	

FIG. 27 STARTER (INNER PARTS)

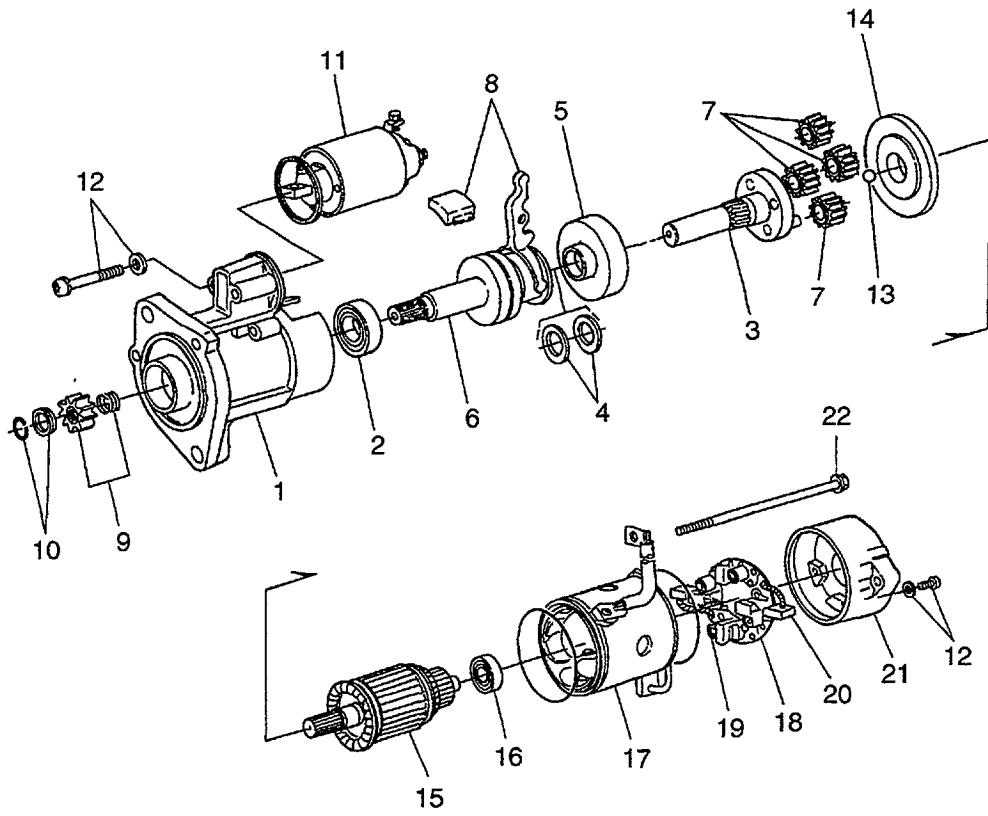
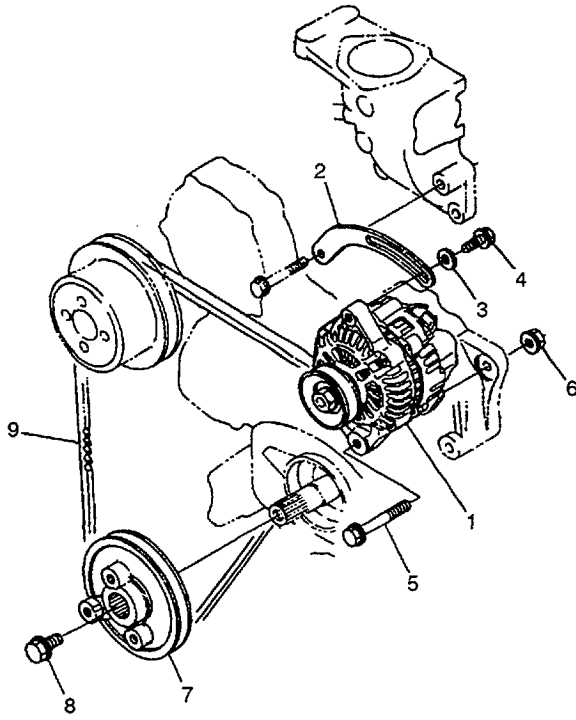


FIG.27

Item No.	Part No.	Mark	Description	Req'd	Remarks : serial No.
A1	BN-1K012-63010		STARTER ASSY	1	INC.1-22 12V 3.0KW
1	BN-1K012-63030		BRACKET,FRONT	1	
2	BN-1C010-63240		SET,BEARING	1	
A2	BN-1K012-63040		SHAFT ASSY	1	INC.3-7
3	BN-1K012-63210		SHAFT,GEAR	1	
4	BN-1C010-63410		SET,WASHER	1	
5	BN-1C010-63260		SET,GEAR,INTERNAL	1	
6	BN-1C010-63330		CLUTCH,OVER RUNNING	1	
7	BN-1C010-63270		GEAR	4	
8	BN-1K012-63050		SET,LEVER	1	
9	BN-1K012-63280		SET,PINION	1	INC.10
10	BN-1C010-63170		SET,STOPPER	1	
11	BN-1C010-63020		SWITCH,MAGNETIC	1	
12	BN-1K012-63760		SET,SCREW	1	
13	BN-6C040-82690		BALL	1	
14	BN-1C010-63520		SET,PACKING	1	
15	BN-1K012-63070		ARMATURE	1	INC.16
16	BN-1C010-63250		BEARING	1	
17	BN-1K012-63080		YOKE	1	
18	BN-1K012-63380		HOLDER,BRUSH	1	INC.19,20
19	BN-1K012-63390		BRUSH,SPRING	4	
20	BN-1K012-63370		BRUSH	2	
21	BN-1K012-63200		BRACKET,REAR	1	
22	BN-1K012-63320		SET,BOLT	1	

FIG. 28 ALTERNATOR & PULLEY



Item No.	Part No.	Mark	Description	Req'd	Remarks : serial No.
1	BN-1C010-64010		ALTERNATOR	1	SEE FIG.29
2	BN-1C010-64420		STAY	1	
3	BN-04015-60080		WASHER	1	
4	BN-01754-50825		BOLT	1	
5	BN-01774-51065		BOLT	1	
6	BN-02771-60100		NUT	1	
7	BN-1C010-74282		PULLEY	1	
8	BN-1C010-91010		BOLT	1	
9	BN-1G541-97011		V-BELT	1	

FIG. 29 ALTERNATOR (INNER PARTS)

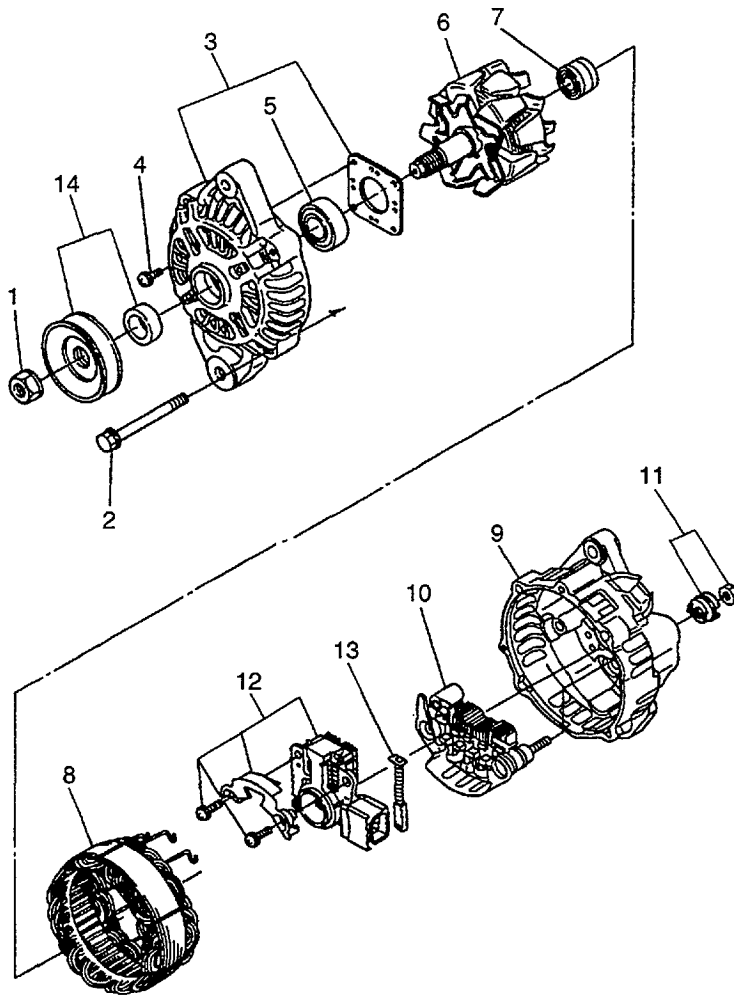
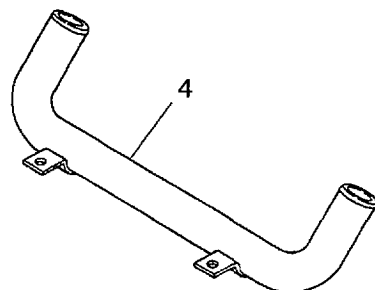
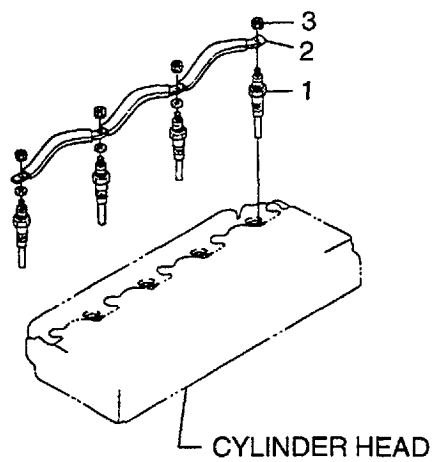


FIG.29

Item No.	Part No.	Mark	Description	Req'd	Remarks : serial No.
A	BN-1C010-64010		ALTERNATOR ASSY	1	INC.1-14 12V 45A
1	BN-1C010-92010		NUT	1	
2	BN-1C010-91050		SET,BOLT	1	
3	BN-1C010-64020		BRACKET,FRONT	1	INC.4,5
4	BN-1C010-93010		SET,BOLT	1	
5	BN-1C010-64780		BEARING	1	
6	BN-1C010-64120		ROTOR	1	INC.7
7	BN-1C010-64770		BEARING	1	
8	BN-1C010-64080		STATOR	1	
9	BN-1C010-64060		BRACKET,REAR	1	INC.10-13
10	BN-1C010-64850		RECTIFIER	1	
11	BN-1C010-92080		SET,NUT	1	
12	BN-1C010-64600		SET,REGULATOR	1	
13	BN-1C010-64310		SET,BRUSH	1	
14	BN-1C010-64110		PULLEY	1	

FIG. 30 GLOW PLUG & OTHER PARTS



Item No.	Part No.	Mark	Description	Req'd	Remarks : serial No.
1	BN-16415-65510		PLUG,GLOW	4	
2	BN-1C010-65560		CORD	1	
3	BN-02761-50040		NUT	4	
4	BN-1K012-83860		PIPE	1	

PARTS NUMBER INDEX

PART No.	FIG.NO.	PART No.	FIG.NO.	PART No.	FIG.NO.	PART No.	FIG.NO.
BN-01311-10616	23	BN-02771-50120	23	BN-1C010-01010	1	BN-1C010-24520	9
BN-01513-50616	22	BN-02771-60100	26	BN-1C010-01123	1	BN-1C010-24982	9
BN-01513-50818	22	BN-02771-60100	28	BN-1C010-01503	5	BN-1C010-32110	5
BN-01513-60825	22	BN-02776-50140	22	BN-1C010-03023	7	BN-1C010-32280	14
BN-01517-61030	11	BN-03016-50616	4	BN-1C010-03023	10	BN-1C010-32290	14
BN-01517-61030	26	BN-03016-50616	22	BN-1C010-03450	7	BN-1C010-32880	22
BN-01518-50820	24	BN-03024-50520	18	BN-1C010-04014	4	BN-1C010-33320	13
BN-01754-50614	22	BN-03054-50408	8	BN-1C010-04130	4	BN-1C010-33640	1
BN-01754-50618	24	BN-03054-50508	8	BN-1C010-04162	4	BN-1C010-33650	1
BN-01754-50622	23	BN-03410-00808	10	BN-1C010-04460	3	BN-1C010-35070	4
BN-01754-50812	14	BN-03651-50830	22	BN-1C010-04560	1	BN-1C010-35130	4
BN-01754-50812	22	BN-04013-60050	24	BN-1C010-05120	8	BN-1C010-35630	2
BN-01754-50814	5	BN-04015-60080	28	BN-1C010-05140	8	BN-1C010-36422	7
BN-01754-50814	7	BN-04611-00300	2	BN-1C010-05150	8	BN-1C010-36550	7
BN-01754-50816	6	BN-04611-00620	13	BN-1C010-05200	8	BN-1C010-36920	4
BN-01754-50816	9	BN-04612-00160	10	BN-1C010-05370	8	BN-1C010-36950	4
BN-01754-50816	13	BN-04612-00200	22	BN-1C010-05510	8	BN-1C010-36960	4
BN-01754-50816	16	BN-04612-00300	13	BN-1C010-05670	8	BN-1C010-37010	14
BN-01754-50816	22	BN-04613-50030	24	BN-1C010-11770	11	BN-1C010-37110	1
BN-01754-50820	7	BN-04613-50040	24	BN-1C010-11820	11	BN-1C010-37110	15
BN-01754-50820	11	BN-04613-50050	24	BN-1C010-12310	11	BN-1C010-37110	16
BN-01754-50820	11	BN-04613-50120	23	BN-1C010-12352	11	BN-1C010-37150	14
BN-01754-50820	12	BN-04714-00300	1	BN-1C010-13110	10	BN-1C010-37160	14
BN-01754-50820	22	BN-04717-01200	16	BN-1C010-13120	10	BN-1C010-37172	14
BN-01754-50825	16	BN-04811-10070	23	BN-1C010-13150	10	BN-1C010-37182	14
BN-01754-50825	20	BN-04811-50300	8	BN-1C010-13160	10	BN-1C010-42400	18
BN-01754-50825	22	BN-04811-50300	14	BN-1C010-13240	10	BN-1C010-50800	22
BN-01754-50825	28	BN-04814-00090	7	BN-1C010-13482	10	BN-1C010-51060	21
BN-01754-50830	15	BN-04814-00200	4	BN-1C010-13490	10	BN-1C010-51152	22
BN-01754-50840	17	BN-04814-00220	5	BN-1C010-14020	10	BN-1C010-51170	22
BN-01754-50850	16	BN-04814-00240	4	BN-1C010-14050	10	BN-1C010-51180	22
BN-01754-50850	16	BN-04814-00420	15	BN-1C010-14150	10	BN-1C010-51320	21
BN-01754-50855	4	BN-05012-00512	22	BN-1C010-14280	10	BN-1C010-51620	13
BN-01754-50855	9	BN-05012-00609	22	BN-1C010-14350	10	BN-1C010-51650	22
BN-01754-50865	11	BN-05012-00614	22	BN-1C010-14430	10	BN-1C010-51660	22
BN-01754-50875	13	BN-05012-00822	1	BN-1C010-14500	8	BN-1C010-52110	20
BN-01754-50875	4	BN-05012-01020	1	BN-1C010-14520	8	BN-1C010-52130	22
BN-01754-50875	22	BN-05411-00416	23	BN-1C010-15110	9	BN-1C010-53000	18
BN-01754-50880	15	BN-05411-00416	23	BN-1C010-16012	9	BN-1C010-53000	19
BN-01774-51004	5	BN-05411-00528	10	BN-1C010-16170	22	BN-1C010-53010	19
BN-01774-51014	5	BN-05712-00415	6	BN-1C010-16210	22	BN-1C010-53170	19
BN-01774-51030	1	BN-05712-00415	6	BN-1C010-16220	22	BN-1C010-53610	19
BN-01774-51030	25	BN-05712-00515	2	BN-1C010-16270	9	BN-1C010-53710	18
BN-01774-51035	26	BN-05712-00520	9	BN-1C010-16512	9	BN-1C010-53720	18
BN-01774-51060	10	BN-06311-55030	1	BN-1C010-21310	2	BN-1C010-53730	18
BN-01774-51065	28	BN-06311-85016	8	BN-1C010-21980	2	BN-1C010-53740	18
BN-01774-51230	3	BN-06312-10030	16	BN-1C010-22140	2	BN-1C010-53900	18
BN-01774-61020	18	BN-07715-00401	2	BN-1C010-23300	2	BN-1C010-54120	24
BN-01779-51445	3	BN-07715-00401	6	BN-1C010-23530	2	BN-1C010-54120	24
BN-02056-50060	23	BN-07715-00401	6	BN-1C010-23540	2	BN-1C010-54150	24
BN-02056-50060	24	BN-07715-01605	9	BN-1C010-23950	2	BN-1C010-55140	22
BN-02556-50050	24	BN-08101-06203	22	BN-1C010-23960	2	BN-1C010-55770	24
BN-02751-50060	20	BN-08103-06206	13	BN-1C010-23970	2	BN-1C010-56030	24
BN-02751-50080	7	BN-08143-06302	3	BN-1C010-23980	2	BN-1C010-56150	24
BN-02751-50080	11	BN-08153-06304	22	BN-1C010-24012	9	BN-1C010-56750	23
BN-02751-50080	13	BN-09318-88200	14	BN-1C010-24022	9	BN-1C010-57150	23
BN-02751-50080	20	BN-09318-88200	16	BN-1C010-24112	2	BN-1C010-57510	23
BN-02751-50080	22	BN-09661-40170	18	BN-1C010-24250	9	BN-1C010-57620	23
BN-02761-50040	30	BN-09661-70150	20	BN-1C010-24360	9	BN-1C010-57700	23
BN-02761-50050	18	BN-09661-70625	25	BN-1C010-24370	9	BN-1C010-57920	24

PARTS NUMBER INDEX

PART No.	FIG.NO.	PART No.	FIG.NO.	PART No.	FIG.NO.	PART No.	FIG.NO.
BN-1C010-60014	23	BN-1C020-14310	10	BN-1K012-63200	27	BN-15221-33650	1
BN-1C010-60150	23	BN-1C020-16320	22	BN-1K012-63210	27	BN-15221-51030	21
BN-1C010-63020	27	BN-1C020-22010	2	BN-1K012-63280	27	BN-15221-51070	21
BN-1C010-63170	27	BN-1C020-22312	2	BN-1K012-63320	27	BN-15221-51240	21
BN-1C010-63240	27	BN-1C020-22960	2	BN-1K012-63370	27	BN-15221-51270	21
BN-1C010-63250	27	BN-1C020-22970	2	BN-1K012-63380	27	BN-15221-51280	21
BN-1C010-63260	27	BN-1C020-23012	2	BN-1K012-63390	27	BN-15221-51290	21
BN-1C010-63270	27	BN-1C020-23470	2	BN-1K012-63760	27	BN-15221-51382	21
BN-1C010-63330	27	BN-1C020-23910	2	BN-1K012-83860	30	BN-15221-51490	21
BN-1C010-63410	27	BN-1C020-23920	2	BN-12234-67580	7	BN-15221-56280	23
BN-1C010-63520	27	BN-1C020-32430	14	BN-12234-67580	11	BN-15221-91530	7
BN-1C010-64010	28	BN-1C020-55050	23	BN-12331-95230	22	BN-15221-91530	11
BN-1C010-64010	29	BN-1C020-55452	23	BN-13901-91020	22	BN-15261-03370	1
BN-1C010-64020	29	BN-1G521-83221	13	BN-14109-51300	21	BN-15261-03370	1
BN-1C010-64060	29	BN-1G522-72703	16	BN-14109-51300	21	BN-15261-13360	10
BN-1C010-64080	29	BN-1G522-83062	13	BN-14301-42750	25	BN-15261-92020	24
BN-1C010-64110	29	BN-1G522-83190	13	BN-14301-43290	25	BN-15261-96011	7
BN-1C010-64120	29	BN-1G541-97011	28	BN-14311-60504	20	BN-15321-25163	3
BN-1C010-64310	29	BN-1K011-36411	7	BN-14601-98300	21	BN-15401-95690	20
BN-1C010-64420	28	BN-1K011-36501	7	BN-14601-98310	21	BN-15401-96650	21
BN-1C010-64600	29	BN-1K011-42010	20	BN-14601-98320	21	BN-15451-96670	4
BN-1C010-64770	29	BN-1K011-42020	25	BN-14601-98330	21	BN-15451-96670	5
BN-1C010-64780	29	BN-1K011-43060	25	BN-14601-98340	21	BN-15471-01740	7
BN-1C010-64850	29	BN-1K011-43140	25	BN-14601-98350	21	BN-15471-57920	23
BN-1C010-65560	30	BN-1K011-43200	25	BN-14601-98370	21	BN-15471-57980	23
BN-1C010-72810	16	BN-1K011-43280	25	BN-14601-98380	21	BN-15471-96650	13
BN-1C010-72820	16	BN-1K011-52030	20	BN-14601-98390	21	BN-15521-14230	10
BN-1C010-72922	16	BN-1K011-57562	13	BN-14601-98410	21	BN-15521-14230	10
BN-1C010-73010	16	BN-1K011-73261	16	BN-14601-98420	21	BN-15521-96020	1
BN-1C010-73030	15	BN-1K011-74111	17	BN-14601-98430	21	BN-15521-96020	7
BN-1C010-73060	15	BN-1K011-74151	17	BN-14601-98440	21	BN-15531-39010	1
BN-1C010-73270	16	BN-1K011-74250	17	BN-14601-98450	21	BN-15601-15550	9
BN-1C010-73350	16	BN-1K012-04601	3	BN-14601-98460	21	BN-15601-96650	24
BN-1C010-73430	15	BN-1K012-11630	12	BN-14601-98470	21	BN-15602-63820	3
BN-1C010-74282	28	BN-1K012-11640	12	BN-14601-98480	21	BN-15707-33360	13
BN-1C010-91010	28	BN-1K012-11740	12	BN-14601-98490	21	BN-15707-33750	5
BN-1C010-91020	8	BN-1K012-25012	3	BN-14611-51200	21	BN-15841-53160	19
BN-1C010-91050	29	BN-1K012-42500	18	BN-14611-51250	21	BN-15841-53230	19
BN-1C010-92010	29	BN-1K012-43010	25	BN-14611-51440	21	BN-15841-53230	19
BN-1C010-92080	29	BN-1K012-43800	25	BN-14911-42750	20	BN-15841-53350	19
BN-1C010-93010	29	BN-1K012-50050	20	BN-14971-42750	18	BN-15841-53622	18
BN-1C010-94510	23	BN-1K012-50050	22	BN-15021-14240	10	BN-15841-53850	18
BN-1C010-96010	1	BN-1K012-50050	23	BN-15021-14240	10	BN-15841-53860	18
BN-1C010-96020	4	BN-1K012-50050	24	BN-15021-33660	1	BN-15841-53860	18
BN-1C010-96160	1	BN-1K012-51010	20	BN-15021-33660	22	BN-15841-54100	24
BN-1C010-96960	13	BN-1K012-51010	21	BN-15021-33660	24	BN-15841-54220	24
BN-1C011-21050	2	BN-1K012-51050	21	BN-15108-57280	24	BN-15841-54260	24
BN-1C011-21090	2	BN-1K012-53890	18	BN-15109-33630	16	BN-15841-54270	13
BN-1C011-21110	2	BN-1K012-55100	23	BN-15109-33660	16	BN-15841-92020	24
BN-1C011-21910	2	BN-1K012-56020	23	BN-15221-03370	7	BN-15841-92030	19
BN-1C011-26301	6	BN-1K012-56410	24	BN-15221-03380	1	BN-15841-92330	24
BN-1C011-26401	6	BN-1K012-56480	24	BN-15221-03380	1	BN-15841-94040	19
BN-1C011-26970	6	BN-1K012-58570	23	BN-15221-03390	1	BN-15841-96020	7
BN-1C011-26980	6	BN-1K012-63010	26	BN-15221-03490	7	BN-15841-98100	19
BN-1C011-26990	6	BN-1K012-63010	27	BN-15221-13240	10	BN-15841-98510	19
BN-1C020-03310	7	BN-1K012-63030	27	BN-15221-13280	10	BN-15841-98520	19
BN-1C020-03600	7	BN-1K012-63040	27	BN-15221-13330	10	BN-15841-98530	19
BN-1C020-03610	7	BN-1K012-63050	27	BN-15221-13980	10	BN-15841-98540	19
BN-1C020-04140	4	BN-1K012-63070	27	BN-15221-14430	23	BN-15841-98550	19
BN-1C020-13460	10	BN-1K012-63080	27	BN-15221-33610	1	BN-15841-98560	19

PARTS NUMBER INDEX

PART No.	FIG.NO.	PART No.	FIG.NO.	PART No.	FIG.NO.	PART No.	FIG.NO.
BN-15841-98570	19	BN-19202-91010	23				
BN-15841-98580	19	BN-19202-96830	22				
BN-15841-98590	19	BN-6C040-82690	27				
BN-15841-98600	19	BN-68811-42270	12				
BN-15841-98610	19	BN-68849-66430	3				
BN-15841-98620	19						
BN-15841-98630	19						
BN-15841-98640	19						
BN-15841-98650	19						
BN-15841-98660	19						
BN-15841-98670	19						
BN-15841-98680	19						
BN-15841-98690	19						
BN-15841-98700	19						
BN-15841-98710	19						
BN-15841-98720	19						
BN-15841-98730	19						
BN-15841-98740	19						
BN-15841-98750	19						
BN-15841-98760	19						
BN-15841-98770	19						
BN-15841-98780	19						
BN-15841-98790	19						
BN-15841-98800	19						
BN-15841-98810	19						
BN-15841-98820	19						
BN-15841-98830	19						
BN-15841-98840	19						
BN-15841-98850	19						
BN-15841-98860	19						
BN-15841-98870	19						
BN-15841-98880	19						
BN-15841-98890	19						
BN-15841-98900	19						
BN-15841-98910	19						
BN-15841-98920	19						
BN-15852-33140	8						
BN-15852-33140	14						
BN-16221-54420	13						
BN-16241-05550	8						
BN-16241-05550	11						
BN-16241-05550	15						
BN-16241-13330	10						
BN-16241-13540	10						
BN-16241-14240	10						
BN-16241-33510	8						
BN-16241-96020	15						
BN-16241-96020	16						
BN-16264-52140	20						
BN-16264-83342	4						
BN-16415-51220	21						
BN-16415-65510	30						
BN-16415-83041	16						
BN-16454-51230	21						
BN-16475-51610	21						
BN-16475-53280	19						
BN-16683-96020	1						
BN-17321-13560	10						
BN-17371-95800	13						
BN-19077-53650	18						

No. PE-V3300-BF-TCM-1A

平成13年12月 発行

TCM株式会社

本 社 大阪市西区京町堀1-15-10

発 行 TCMテクノ株式会社

ISSUED : December, 2001

TCM CORPORATION

INTERNATIONAL MARKETING DIVISION: 1-15-5, Nishi-shimbashi, Minato-ku, Tokyo
105-0003, Japan

FAX: Japan +81-3-35918152, 3-35918153

無断で転載・複製を禁ず
All rights reserved.

I-1312001(H) Printed in Japan

